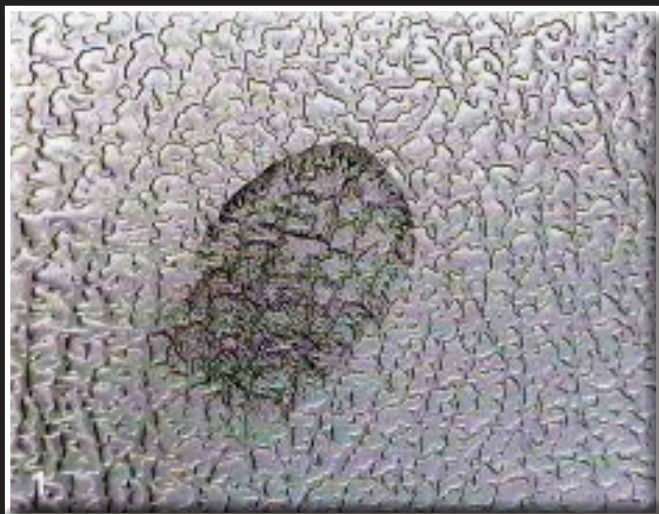
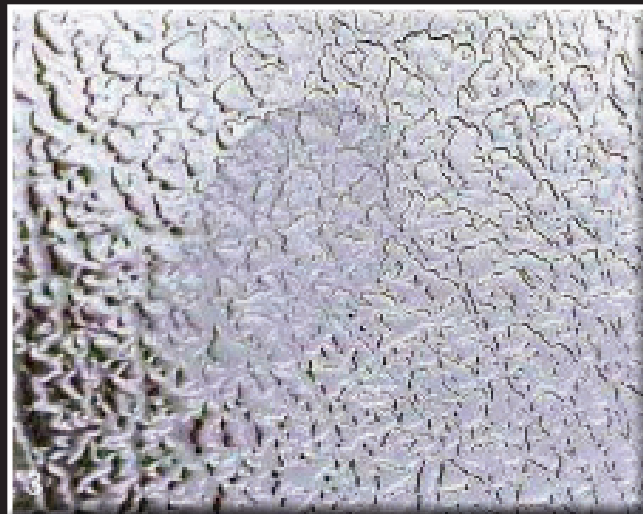


The INOX-TEC®-process

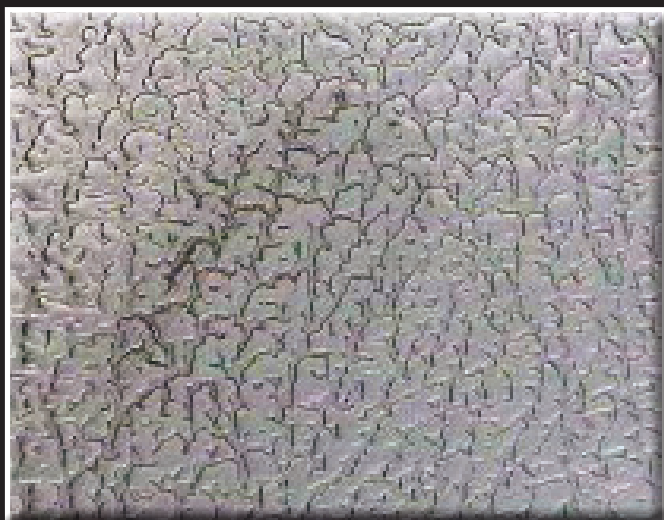
for cleaner stainless steel surfaces



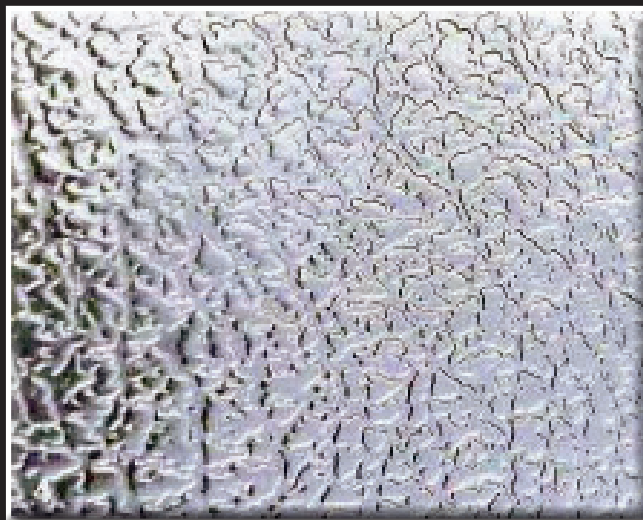
Fingerprints on design leather grain, untreated



Fingerprints on design leather grain, treated with INOX-TEC®



Fingerprints lightly wiped off design leather grain, untreated



Fingerprints lightly wiped off design leather grain, treated with INOX-TEC®

In highly frequented areas where stainless steel is used for example as elevator panelling, hand rails etc., passersby automatically leave their fingerprints behind.

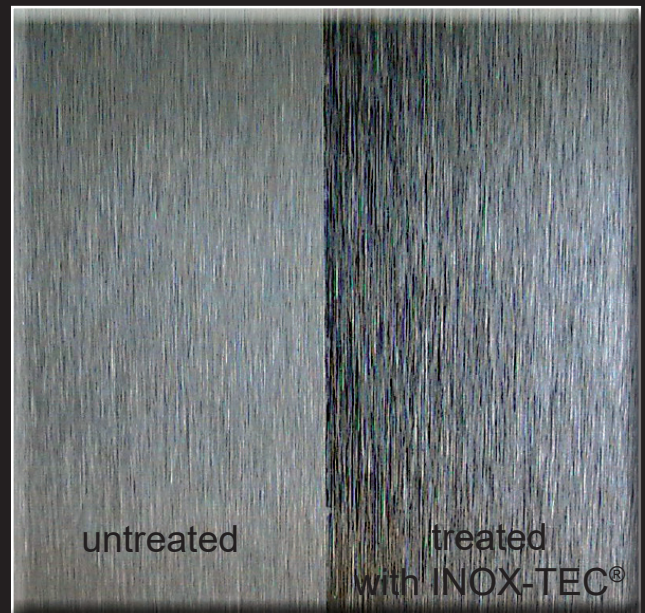
The **INOX-TEC®-process** for stainless steel surfaces reduces these unsightly traces. It makes it easy to remove fingerprints and all kinds of dirt and even graffiti, without any problems and without leaving any residues.

It offers optimum corrosion resistance and eliminates differences in gloss and stripes in sheets of different thicknesses and from different deliveries.

During the production process, a stainless steel sheet goes through numerous stages. Abrasion from deflection rollers, driver rollers and guiding rollers leave their traces on the surfaces and even in a thin surface coating.

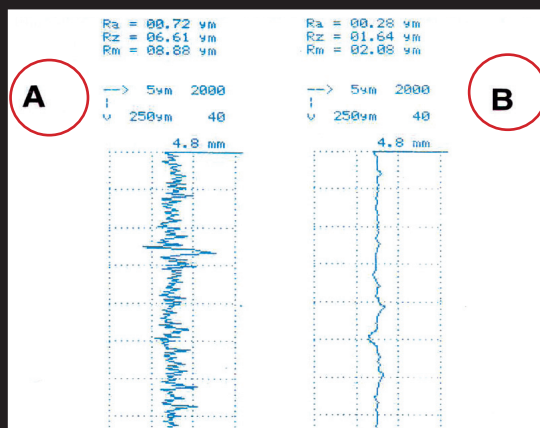
The INOX-TEC® treatment removes the rough areas by stripping off a surface layer measuring just a few micron.

This procedure is gentle on the materials without causing any micro structural change. Surface roughness can be halved, crests and burrs are removed. It entails a minimum workload for basic cleaning and care. The surface can be easily cleaned with all non-abrasive cleaning agents. Usually the wiping with clean and soft towel is sufficient.

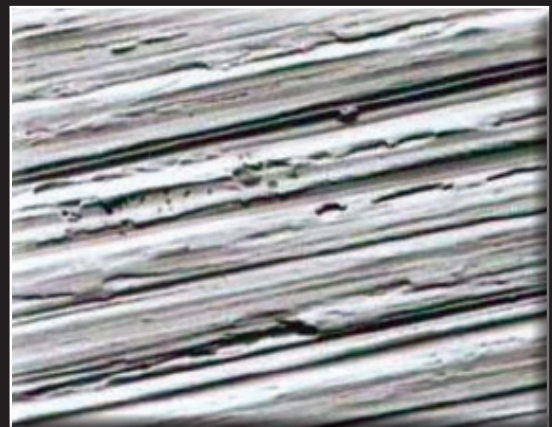


Surface: 2 G/ Grit 240

Protocol of roughness measurements on a stainless steel sheet:



A) ground, grain 180
B) treated with INOX-TEC®



Ground with grain 320,
magnified 650 fold

INOX-COLOR offers a wide spectrum on services:

Colouring using the **INOX-SPECTRAL®-process**, electropolishing, passivating, pickling, grinding, brushing, glas bead blasting and mirror polishing.
Samples are available.

INOX-COLOR GmbH

Dreisteinheumatte 6 • DE-74731 Walldürn
Tel. +49 (0) 62 82/ 92 38-0 • Fax +49 (0) 62 82/ 92 38-99
www.inox-color.com • info@inox-color.com

