

INOX-COLOR

Versatility in Stainless Steel

The company



INOX-COLOR GmbH & Co. KG



 **Medium-sized company (currently 72 employees)**

Location: 74731 Walldürn/ Odenwald - Germany

Founded: 1984

 **Specialist for surface refining Stainless Steel**

High in-house production depth

Flexible

Customized

Broad range of services for wage work

Worldwide deliveries

 **Industries e.g.**

Structural-facings sector, Architecture, shop fitting, automotive, aerospace engineering, pharmaceutical and medical technology, food industry and kitchen technology, etc.


Our Service – Your Advantage!



<u>Mechanically</u>	<u>Electro-chemical</u>	<u>Chemical</u>	<u>Trade</u>
Stainless Steel			
<ul style="list-style-type: none">• Grinding• Mirror polishing• Brushing• Bead blasting	<ul style="list-style-type: none">• Electro polishing• Protective polishing• Pickling• INOX-TEC®• PEARLTEC®	<ul style="list-style-type: none">• Dip Pickling• Spray Pickling• INOX-SPECTRAL®	<p>Sheet metal (1.4301, AISI 304) (1.4401, AISI 316)</p> <ul style="list-style-type: none">• decorated• patterned• etc.
		<p style="text-align: center;">NEW!</p> <ul style="list-style-type: none">• Substitutes	


Stainless steel in colour INOX-SPECTRAL[®]-process

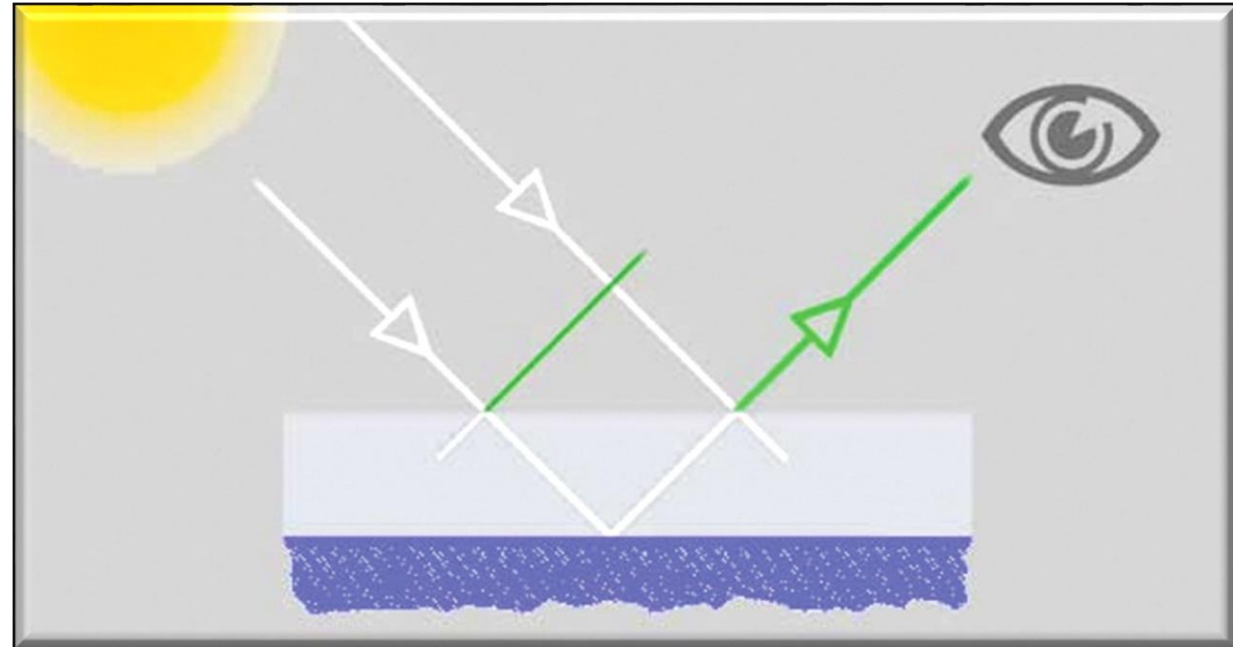


 Chemical process – no paint application!

 Warranty over **30 years**

 Increases the
Corrosion resistance

 max. Bath size
7.000 x 1.200 x 2.000 mm



Colour fans since 1985



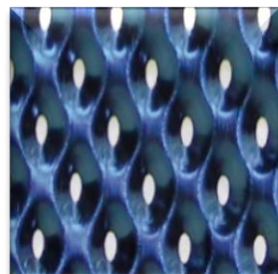
Stainless Steel in colour INOX-SPECTRAL[®]-process



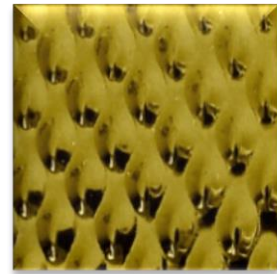
champagne



bronze



Cobalt blue



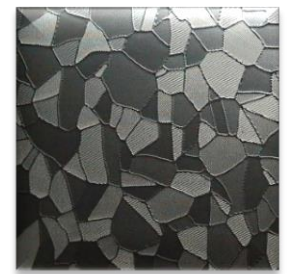
gold



red



green



black

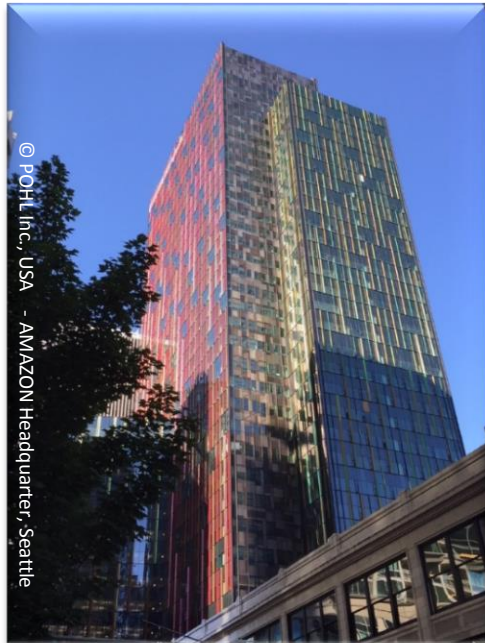
Surface refinement

Colour design of Stainless Steel



Exterior architecture:

Facades, ceilings,
walls, roofs etc..



Interior architecture:

Visual protection
(screen), railings, shop
fitting, etc.



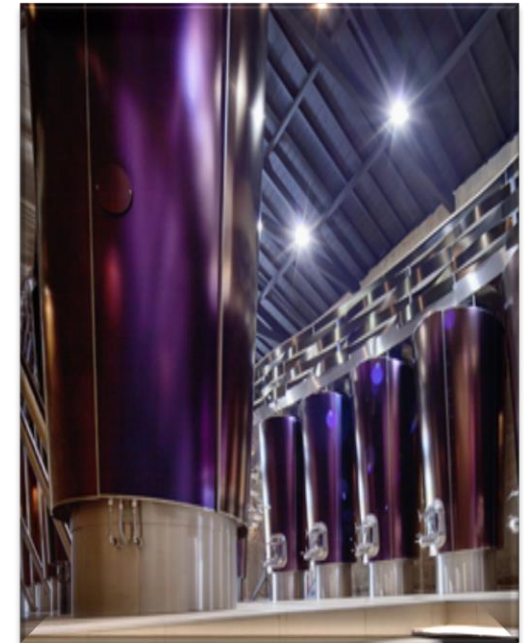
Art:

Gardens, sculptures,
etc.



Industry:

Food industry,
etc.

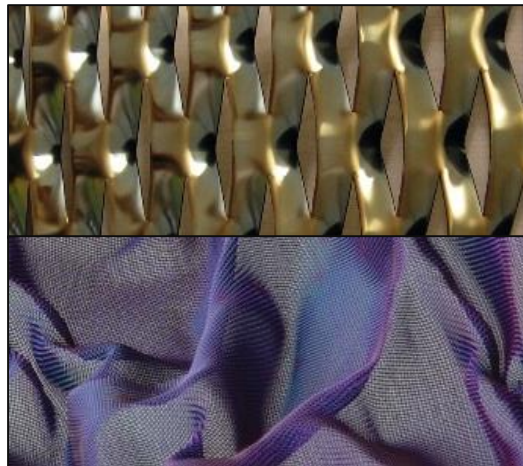


Surface refinement

Colour design of Stainless Steel products

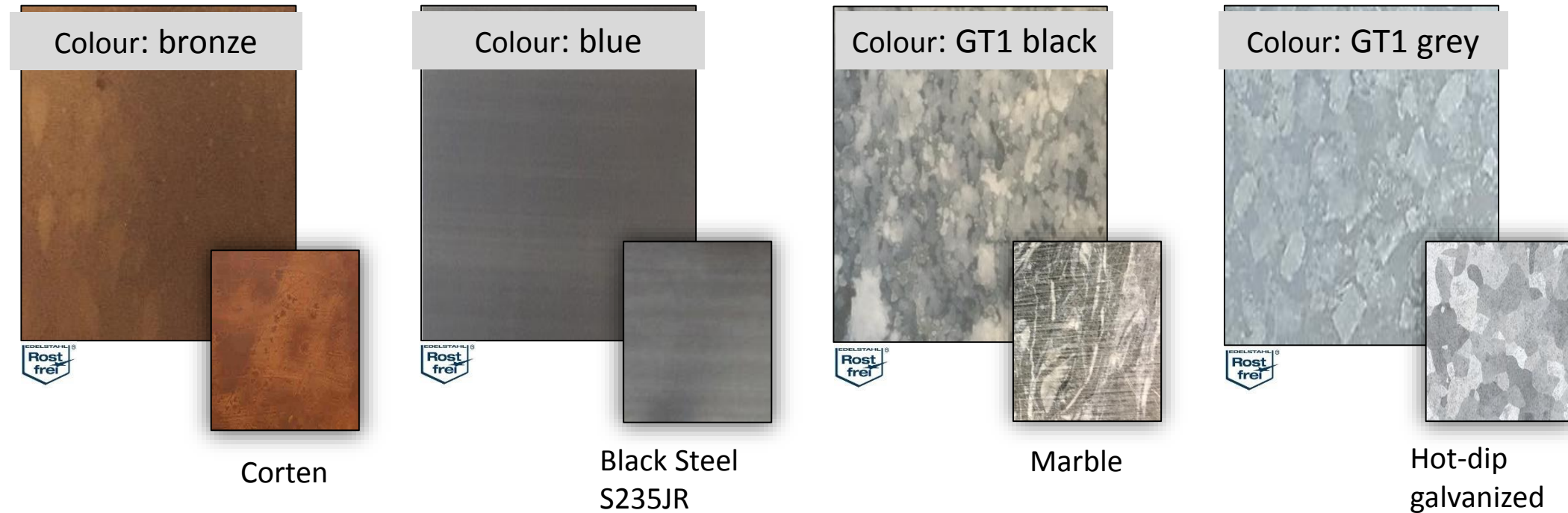


- Small parts, e.g. springs, screws, rivets etc.
- Expanded metal, wire mesh, profiles, structural elements, workpieces etc.



Substitutes

Alternative Stainless Steel surfaces as a substitute:



Clean surfaces

untreated



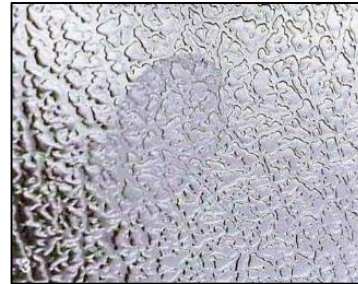
Dessin „Ledernarben“
untreated



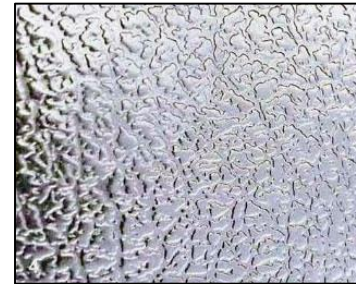
Dessin „Ledernarben“
untreated, wiped off



INOX-TEC®-process



Dessin „Ledernarben“
INOX-TEC® treated



Dessin „Ledernarben“
INOX-TEC® treated,
wiped off

treated

PEARLTEC®-process



Impact protection (Automotive)
PEARLTEC® treated

Clean surfaces



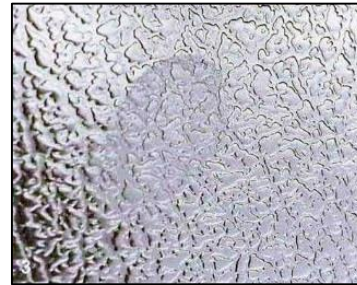
Dessin „Ledernarben“
untreated



Dessin „Ledernarben“
untreated, wiped off



INOX-TEC®-process



Dessin „Ledernarben“
INOX-TEC® treated



Dessin „Ledernarben“
INOX-TEC® treated,
wiped off

PEARLTEC®-process



Impact protection (Automotive)
PEARLTEC® treated

- Hygiene
- less/ barely visible fingerprints
- Residue-free removal of all kinds of contaminants (also graffiti)
- Optimal corrosion resistance
- etc.

Our Know-How – Your added value!



Stainless Steel

**Specialist for
Surface refinement**



Our Know-How – Your added value!



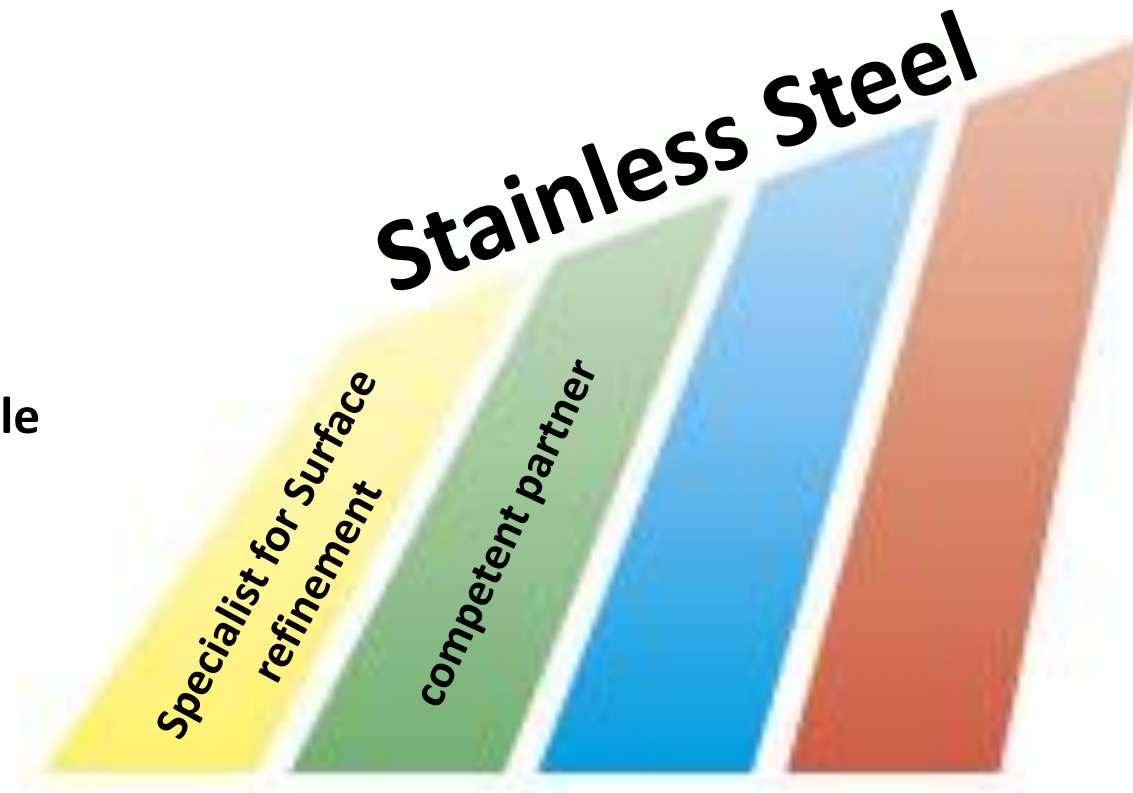
Your
competent partner



Our Know-How – Your added value!



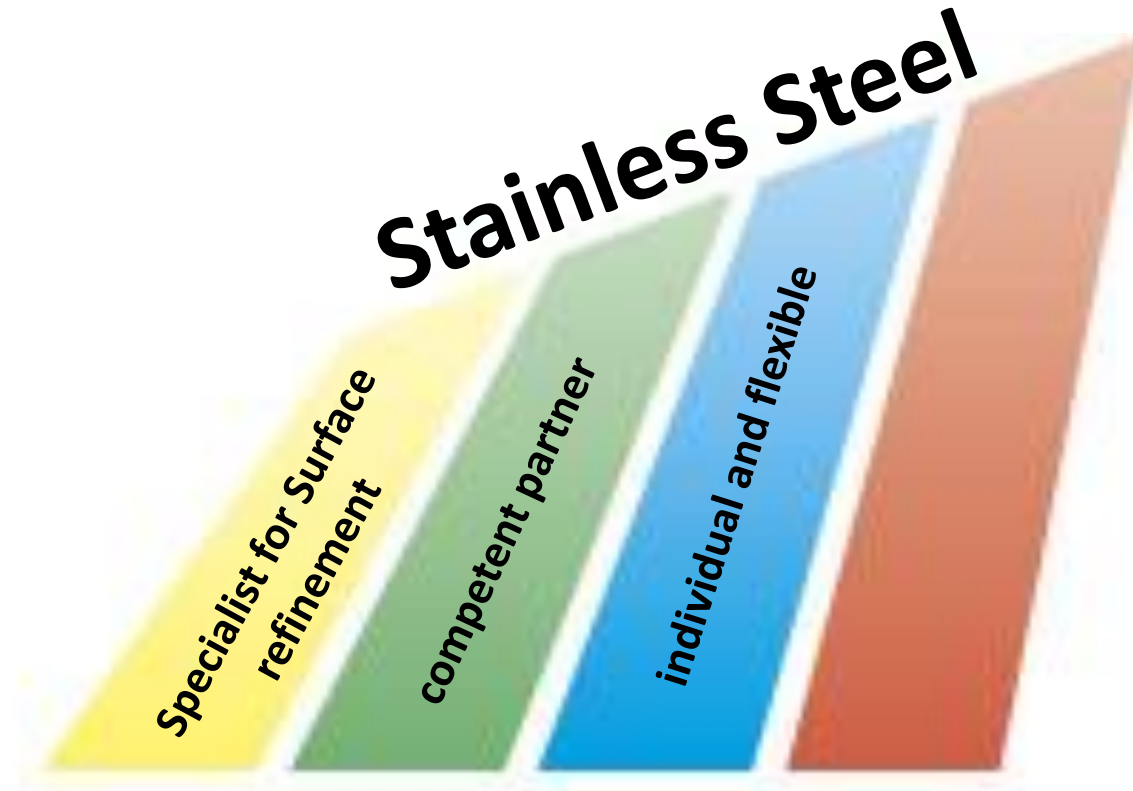
individual and flexible



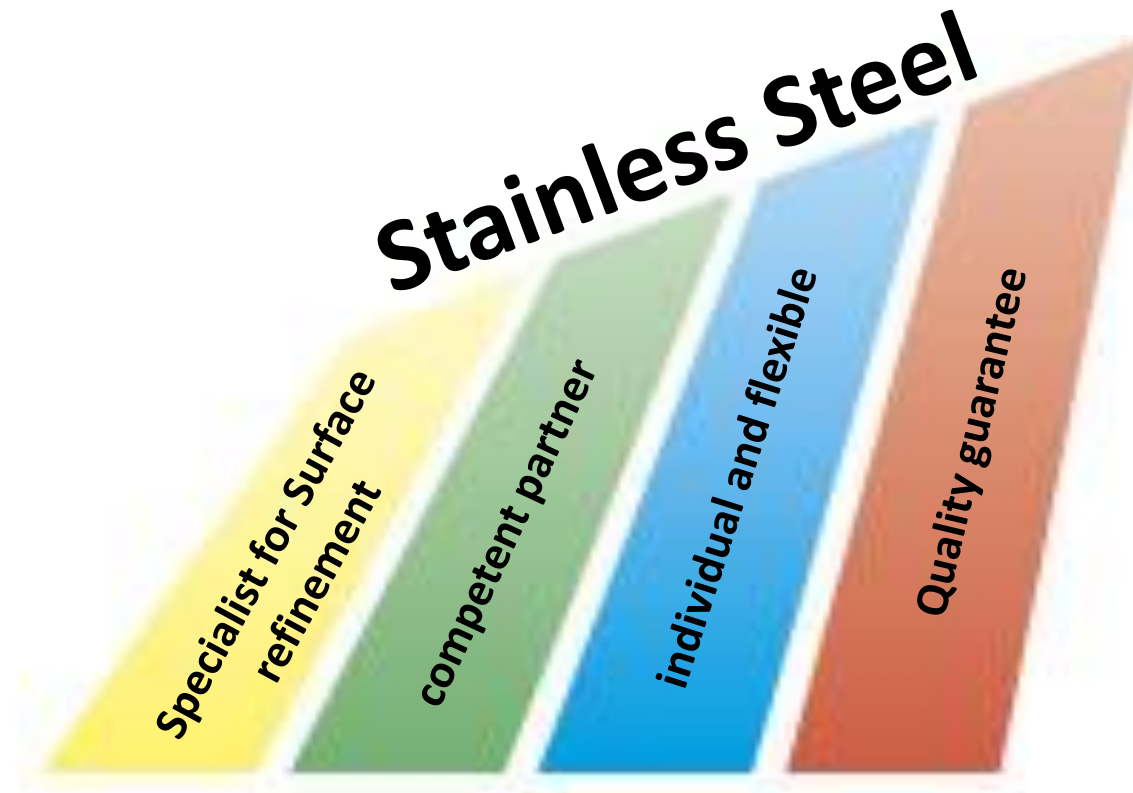
Our Know-How – Your added value!



Quality guarantee



Our Know-How – Your added value!



Thank you for your attention!

INOX-COLOR GmbH & Co. KG

Dreisteinheumatte 6

DE-74731 Walldürn

Tel. +49 (0) 6282/9238-0

Fax +49 (0) 6282/9238-99

www.inox-color.com

info@inox-color.com