



transforming surfaces

Transforming surfaces.

We at **INOXCOLOR** are THE global manufacturer of cross-process surface finishing for sophisticated stainless steel products. Our unique combination competence enables us to offer an unlimited variety of stainless steel surfaces in functional, tactile, and visually appealing quality, which is appreciated by our customers worldwide.



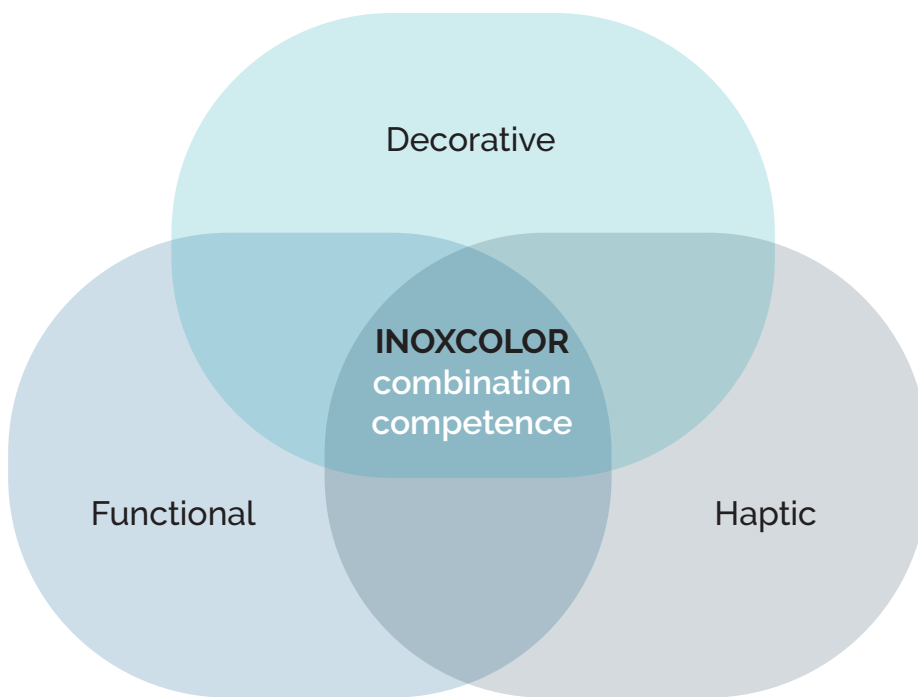
INOXCOLOR – transforming surfaces since 1984

- Think tank
- Trailblazer
- Source of inspiration
- Creativity booster
- Implementation partner
- Market leader

For over 40 years, we have been transforming even unusual customer requests and innovative product ideas into highly customized application solutions. The individual processing methods are usually the starting point for the development of our products. The goal is to achieve maximum customization of our finishing by combining several processes until the desired customer product is defined. With this combination competence, we enable our customers to raise their products to the highest quality level.

Our company is based in Walldürn (southern Germany), where we have been transforming surfaces with about 80 employees since 1984.

Uniquely different.



We are experts and innovators for stainless steel surfaces!

We offer unlimited combination possibilities!

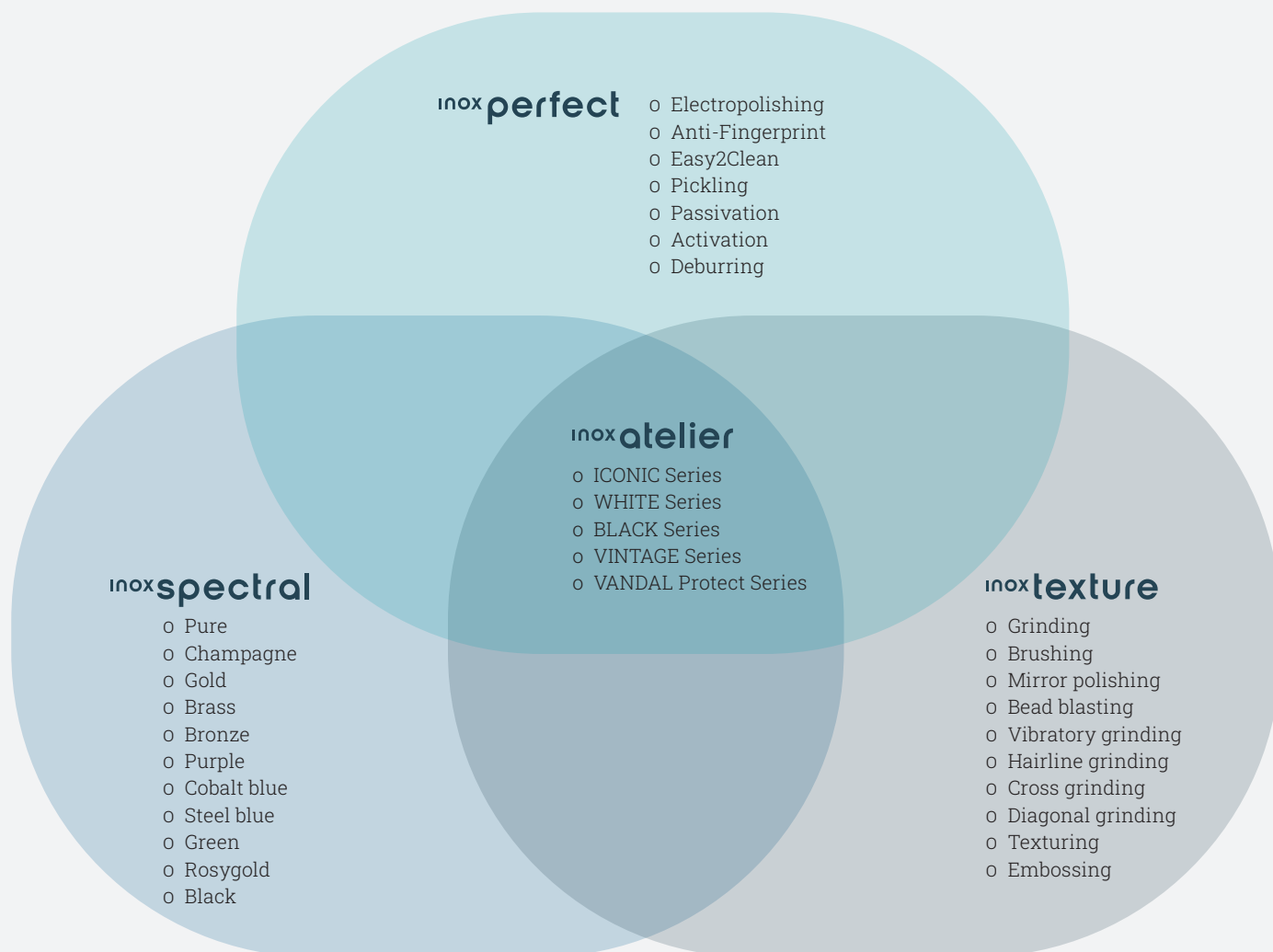
INOXCOLOR's combination competence allows you to parameterize all three dimensions of the surface design and adapt them to your design concept.

We take sophisticated products to the next level!

Flexibility at all levels characterizes our actions.

We develop your own personal surface, manufactured in Germany on the world's largest coloring plant for stainless steel.

Surface finishing processes skilfully combined to meet individual customer requirements.



Spa complex, Ischgl
Krieger Architekten
inoxSPECTRAL –
DURA-matt
Champagne

transformation parameters.

The following transformation parameters modulate the design of our surfaces:

- Mattness >< Gloss
- Light diffusion >< Reflection
- Color >< Color intensity
- Texture >< Haptics
- Structure >< Simplicity
- Homogeneity >< Expressiveness
- Combination competence inoxATELIER

Infinite possibilities.

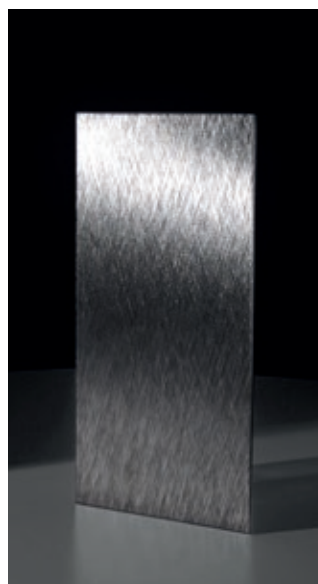
Stainless steel as a material offers unmatched functional properties. With our ability to combine, we create decorative and colored surfaces — completely naturally and without varnishes.

Mattness >< Gloss

Light diffusion >< Reflection

Shiny stainless steel facades vividly reflect their surroundings. Matt surfaces diffuse light, creating a sense of calm and preserving the metallic character.

Enthusiasm arises when facades enter into a lively dialogue with space and atmosphere – variable, versatile, sensual. Architecture thus becomes a dynamic experience, shaped by light, texture, and material.



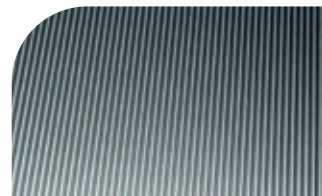
Color without color unfolds in metallic surfaces through natural light reflection and subtle color nuances—without any paint or pigments.

This lively play of colors preserves the elegant purity of the metal. In combination with structure, texture, and installation method, fine color dynamics are created that dynamically stage light and space.

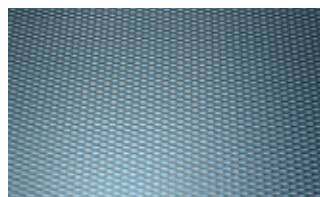
The Vandal Protect Series from **INOXCOLOR** permanently preserves colored stainless steel surfaces in high-traffic areas. Even with intensive use, the color effect is retained – attractive, robust, and elegant for architecture with lasting aesthetics.

Vandal Protect Series

08



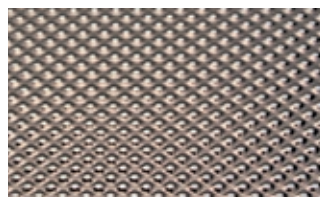
08-VPS01



08-VPS02



08-VPS03



08-VPS04

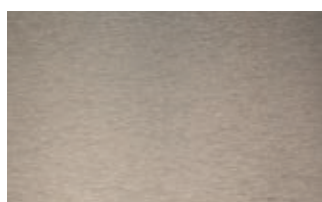


08-VPS05

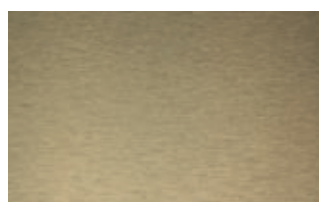
Color >< Color intensity
Color dynamics
UV stability
Durability
Vandalism protection



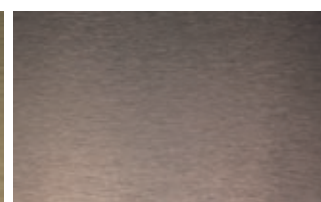
Pure



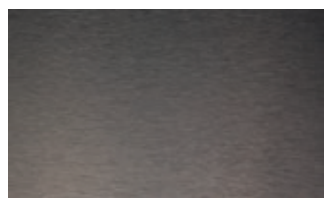
Champagne



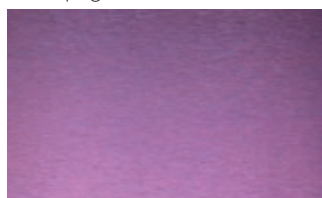
Gold



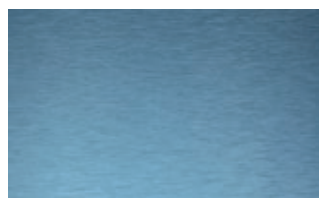
Brass



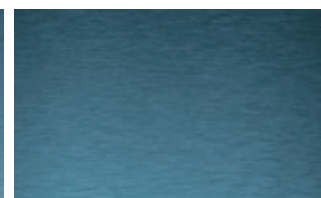
Bronze



Purple*



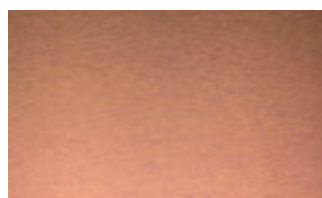
Cobalt blue



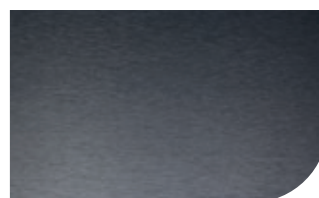
Steel blue



Green*



Rosygold*



Black

* recommended for indoor use only



Satin



Linea



Vibe



Diago



Cross



Nimbus



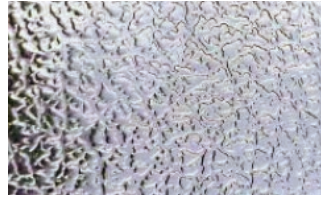
Lumo



Relief & Artevo



Scratch resistance



Anti-Fingerprint



Easy2Clean


Texture >< Haptics
Slip resistance
Easy2Clean
Anti-Graffiti

The structure gives surfaces depth, texture, and distinctive characteristics – from smooth and elegant to rough and dynamic.

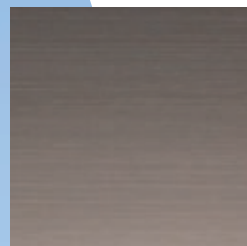
A wide range of gradations enable targeted relief design that emphasizes metallic elegance and refracts light in a variety of ways. This tactile quality creates surfaces that invite touch and experience, and the freedom to subtly define spaces through texture.



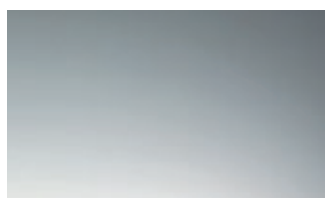
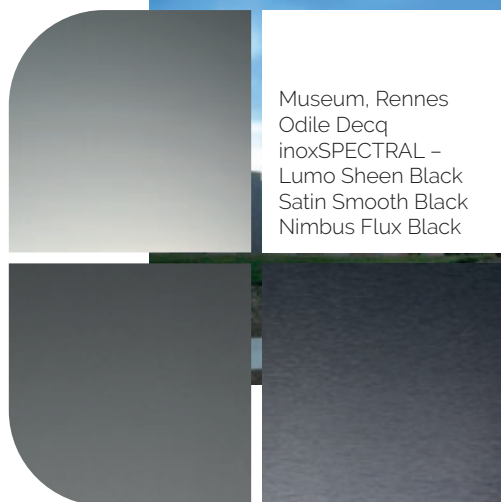
Cerner HQ,
Kansas City
Multistudio
inoxSPECTRAL –
Nimbus Flux
Brass & Bronze



The Post Building,
London
Allford Hall
Monaghan Morris
inoxSPECTRAL –
Linea Bronze



Homogeneity >> Expressiveness



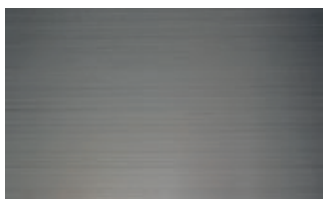
11-HE01

INOXCOLOR masterfully combines all parameters of surface design to create fascinating, constantly innovative stainless steel surfaces. Whether homogeneous and uniform or vividly marbled, each facade tells its own story.

As exclusive, one-of-a-kind pieces or as precisely manufactured serial surfaces, our design surfaces enrich spaces with vibrant aesthetics.



11-HE02



11-HE03



11-HE04



11-HE05



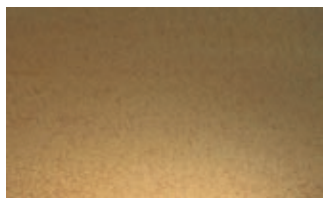
11-HE06



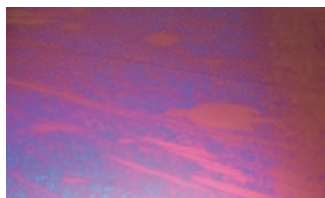
11-HE07



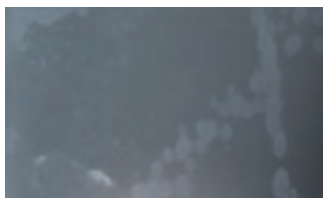
11-HE08



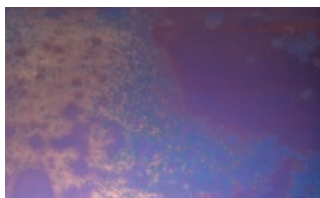
11-HE09



11-HE10



11-HE11



11-HE12

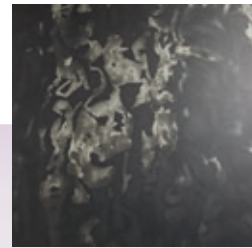


11-HE13

inoxATELIER

combination competence

- ICONIC Series
- WHITE Series
- BLACK Series
- VINTAGE Series
- VANDAL Protect Series



Residence, St. Johann
Hochhäusl & Moos-
brugger
inoxATELIER –
BLACK Series Ignis

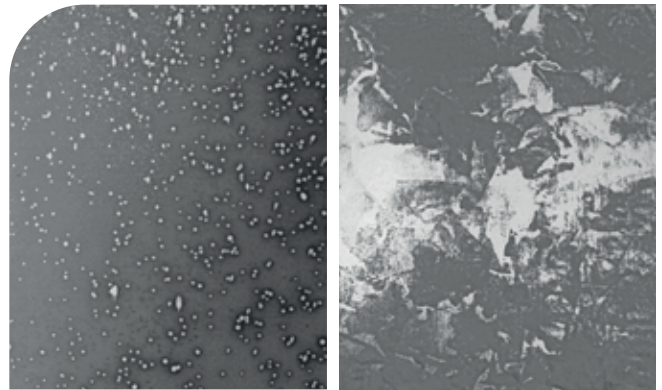


ICONIC Series

The ICONIC Series showcases stainless steel as a living canvas. Each metal panel becomes an exclusive masterpiece – lively, organic, and unique in structure and color.

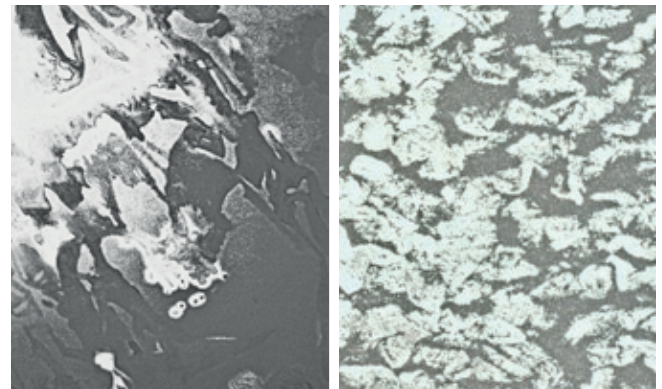
This opens up fascinating design freedom for architects, combining creativity and exclusivity. The biggest challenge lies in integrating this uniqueness into the design.

These four decors illustrate the organic structure of the surface pattern.



Orion

Lithos



Ignis

Tecton

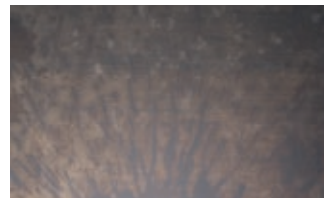
For the ICONIC Series, these decors are combined with the following colors.



13-ICS01



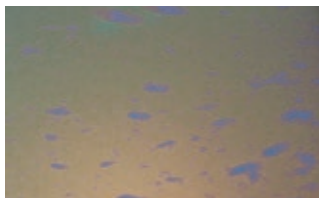
13-ICS02



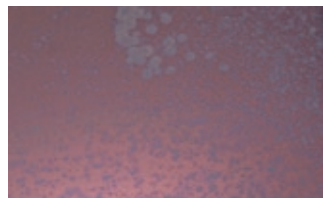
13-ICS03



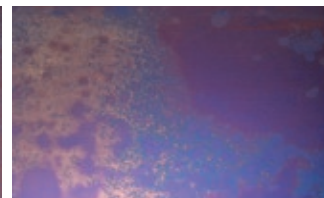
13-ICS04



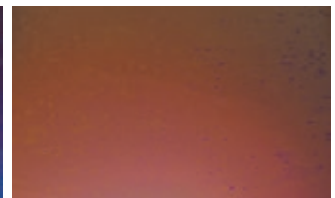
13-ICS05



13-ICS06



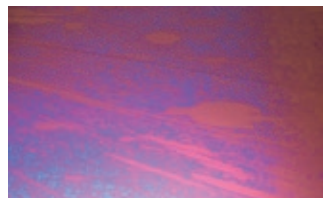
13-ICS07



13-ICS08



13-ICS09



13-ICS10



13-ICS11



The Standard Hotel,
London
Orms Designers &
Architects
inoxSPECTRAL –
Nimbus Flux Black

inoxATELIER combination competence

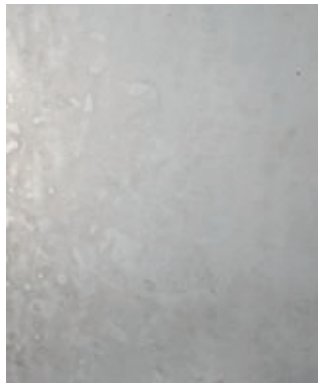
INOXCOLOR perfects the art of combining surface parameters to create distinctive, innovative, unique, and customized surfaces.

inoxATELIER embodies this individuality, lending facades personality and depth while retaining their metallic elegance.

The combination of technical precision and artistic freedom is compelling, bringing architecture to life and making it distinctive.



15-WHS01



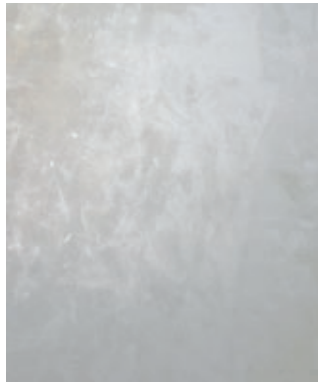
15-WHS02



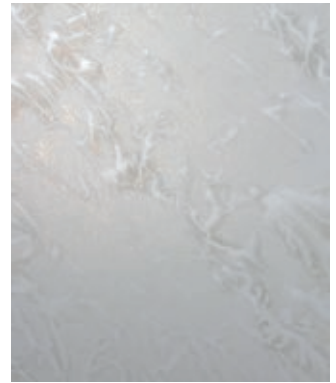
15-WHS03

WHITE Series

The WHITE Series from **INOXCOLOR** offers bright stainless steel surfaces – from homogeneously pure to irregularly marbled. These unique effects combine metallic elegance with lively dynamism.



15-WHS04



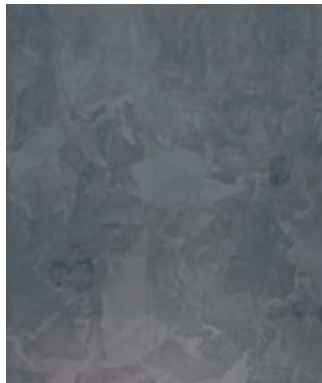
15-WHS05

BLACK Series

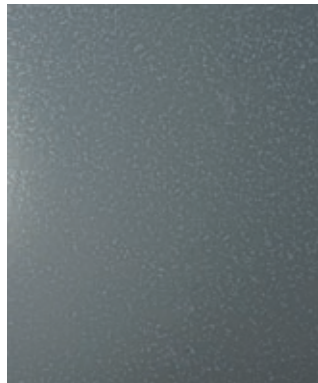
The BLACK Series from **INOXCOLOR** creates fascinating stainless steel surfaces in black and gray – from homogeneous to dynamic. It combines metallic elegance with profound texture and inspires creative architectural accents.



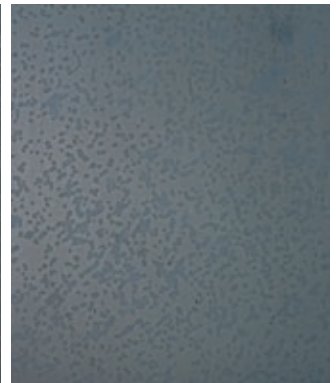
15-BLS01



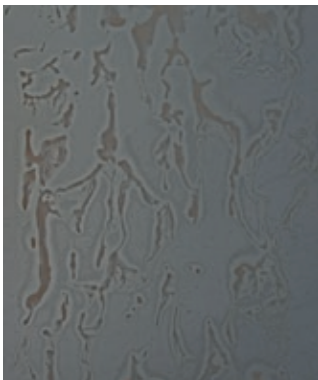
15-BLS02



15-BLS03



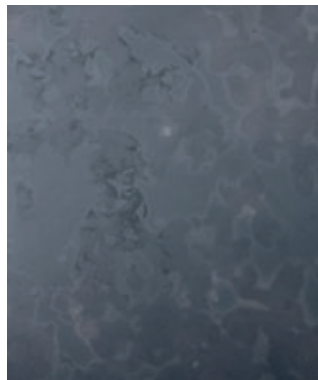
15-BLS04



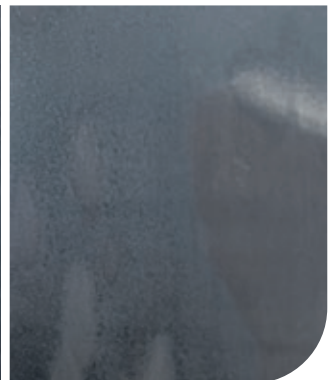
15-BLS05



15-BLS06



15-BLS07

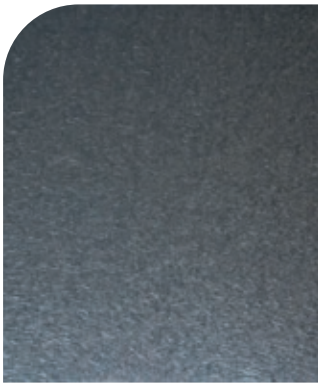


15-BLS08



VINTAGE Series

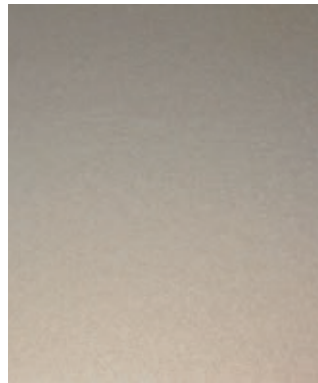
The VINTAGE Series from **INOXCOLOR** combines the elegance of natural patina with metallic exclusivity. Different color nuances and the appeal of marks of wear create lively, inimitable surfaces that lend facades character and a timeless atmosphere.



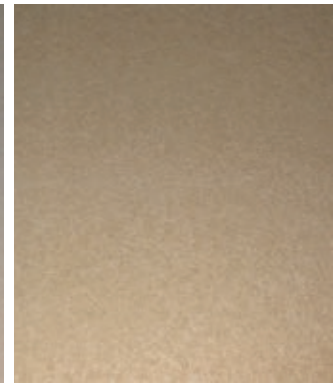
16-VIS01



16-VIS02



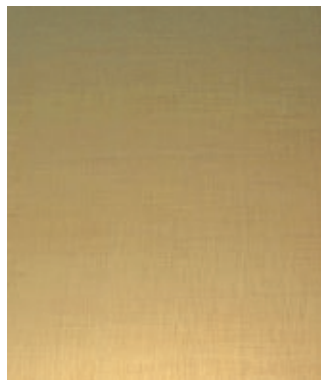
16-VIS03



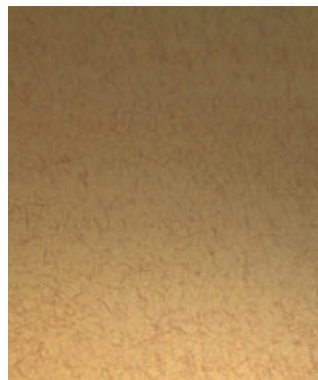
16-VIS04



16-VIS05



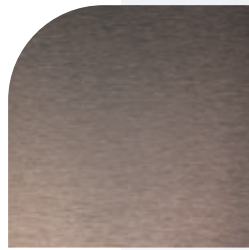
16-VIS06



16-VIS07



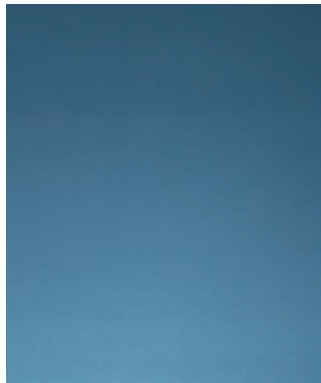
16-VIS08



Residence, Kraichgau
EW//CH Architektur
inoxSPECTRAL –
Satin Smooth Brass



16-VIS09



16-VIS10



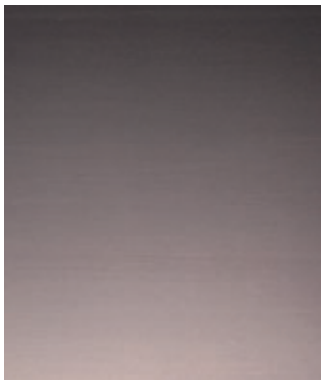
16-VIS11



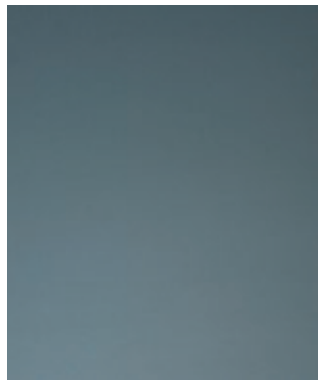
16-VIS12



16-VIS13



16-VIS14



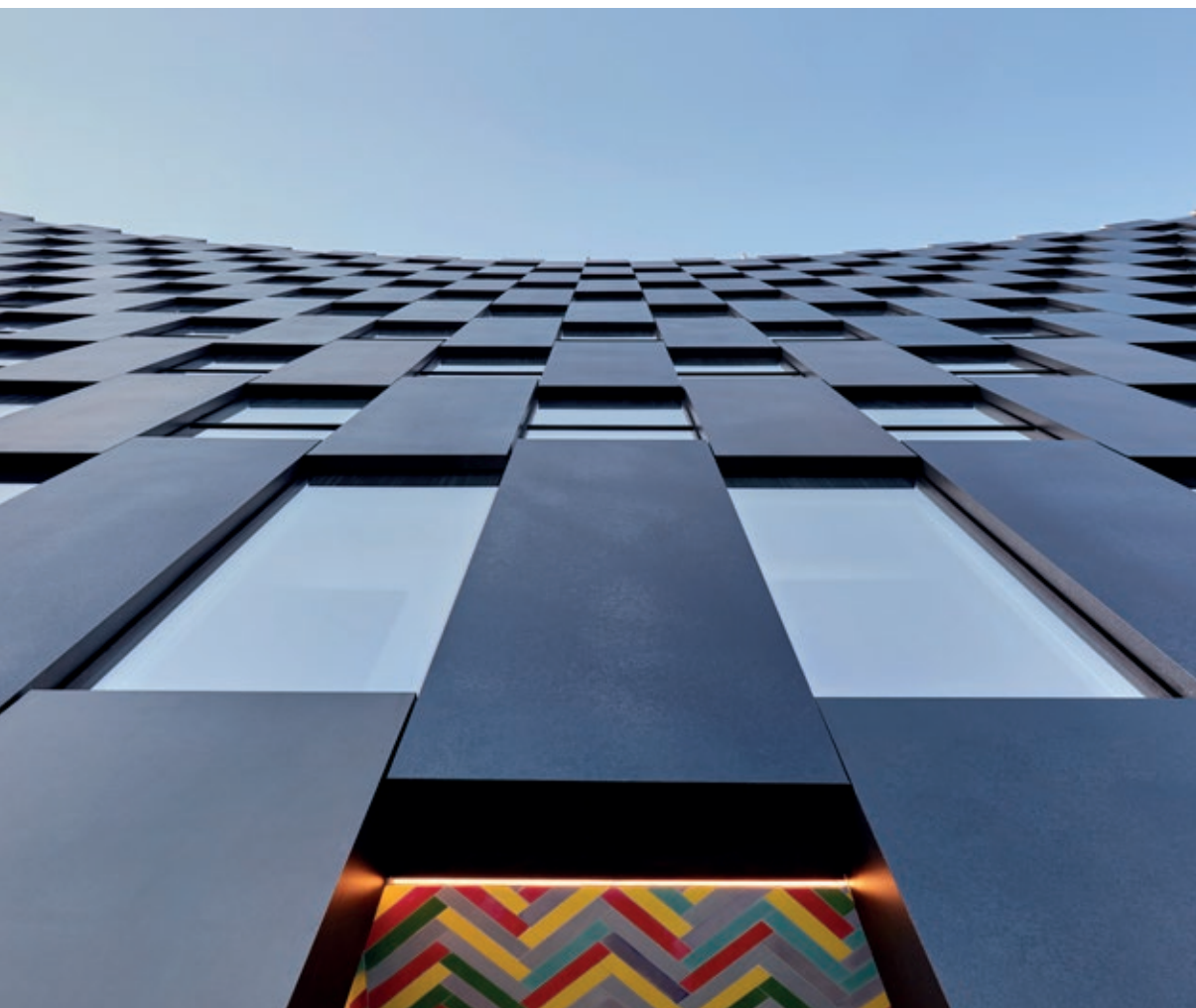
16-VIS15



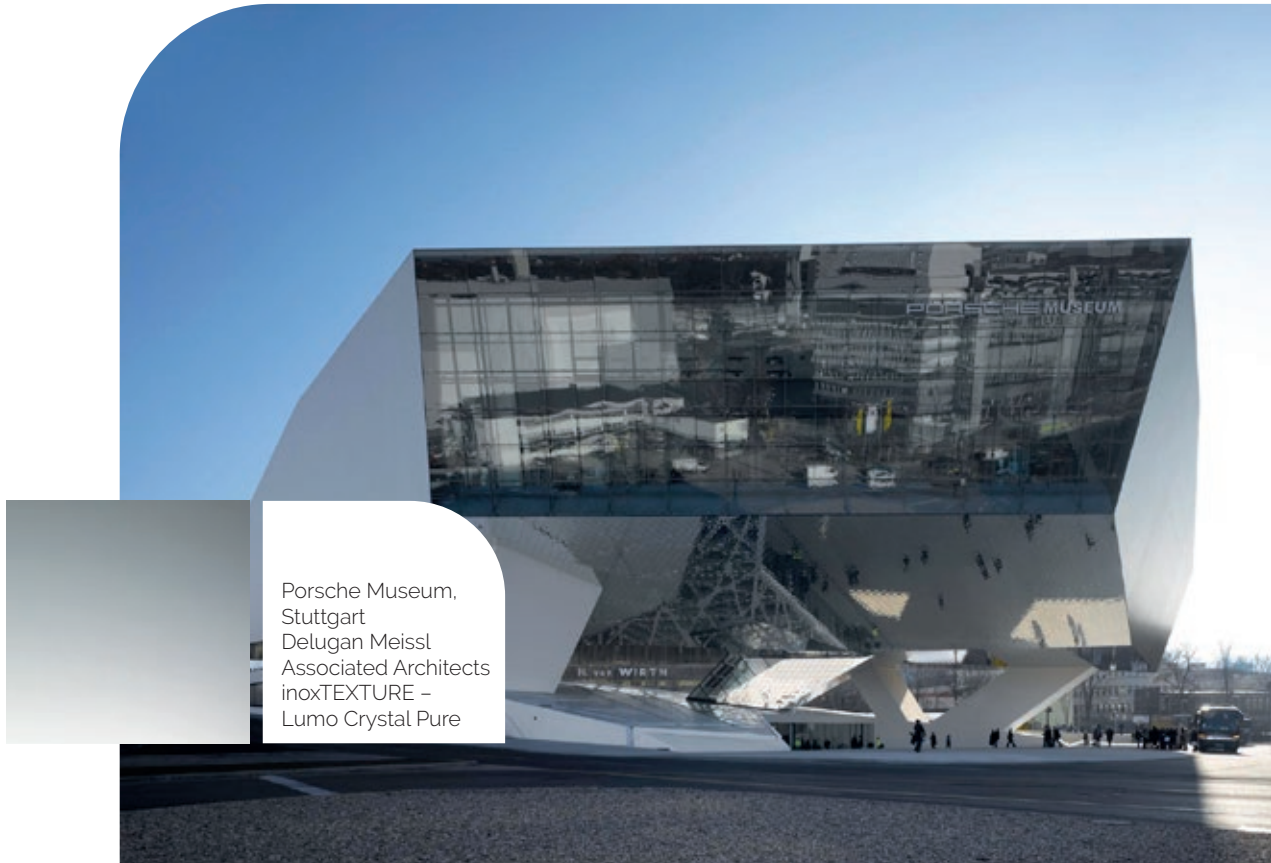
16-VIS16



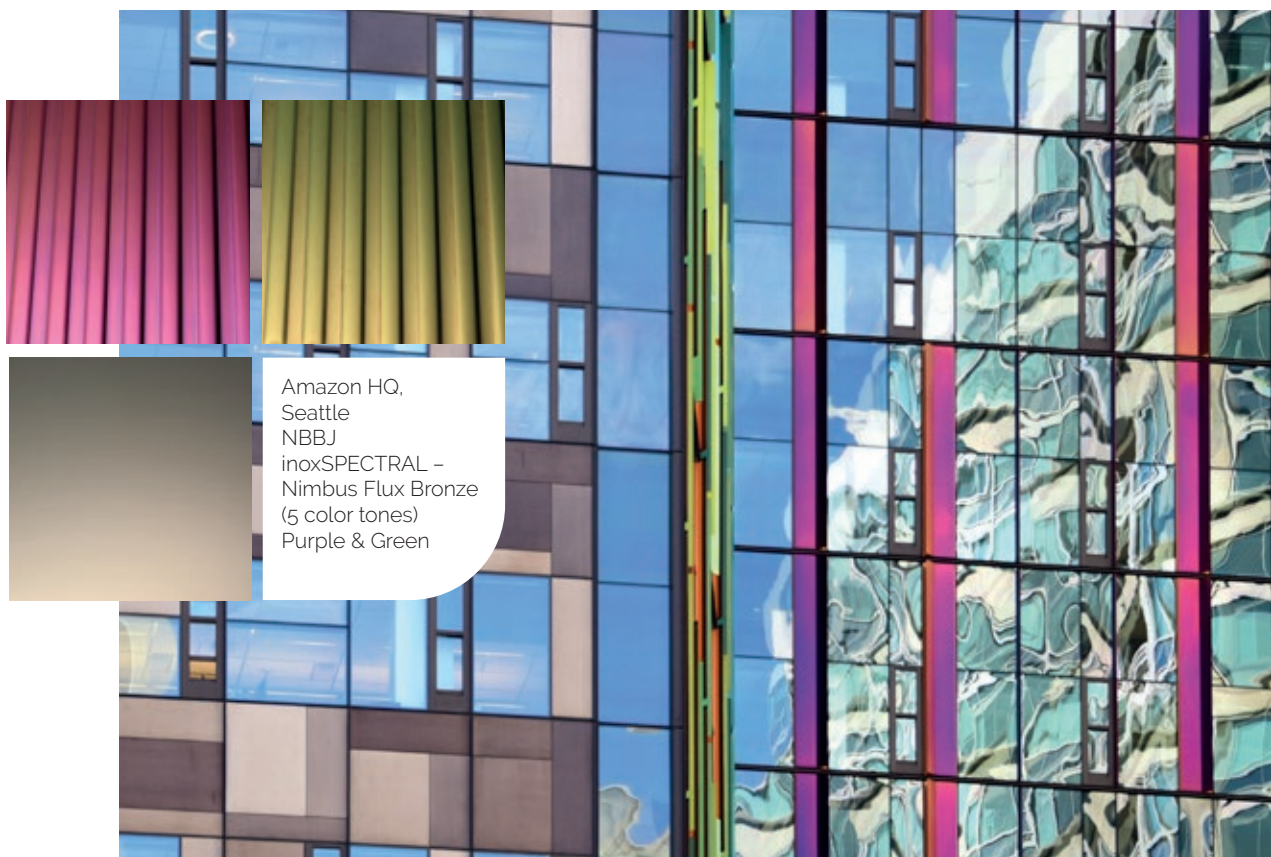
The Smile, New York
BIG | Bjarke Ingels
Group
inoxATELIER –
BLACK Series Orion



Our surfaces enable the creation of sustainable, timeless architecture.



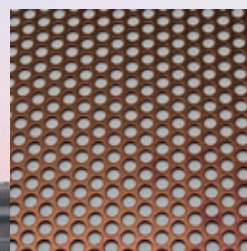
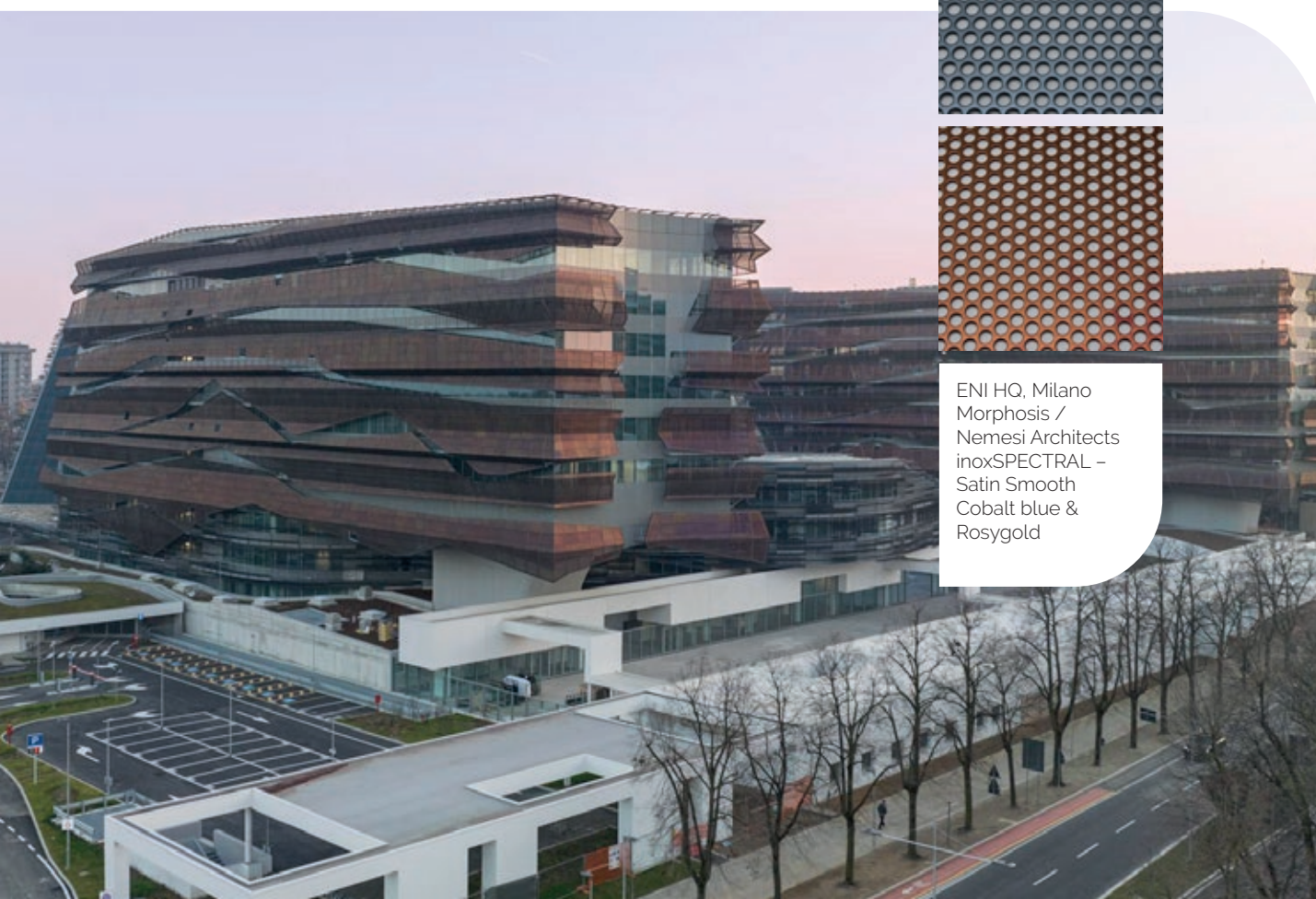
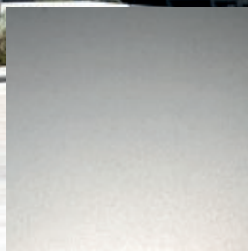
Porsche Museum,
Stuttgart
Delugan Meissl
Associated Architects
inoxTEXTURE –
Lumo Crystal Pure



Amazon HQ,
Seattle
NBBJ
inoxSPECTRAL –
Nimbus Flux Bronze
(5 color tones)
Purple & Green



Museum, Lyon
Coop Himmelb(l)au
inoxTEXTURE –
Nimbus Edge Pure

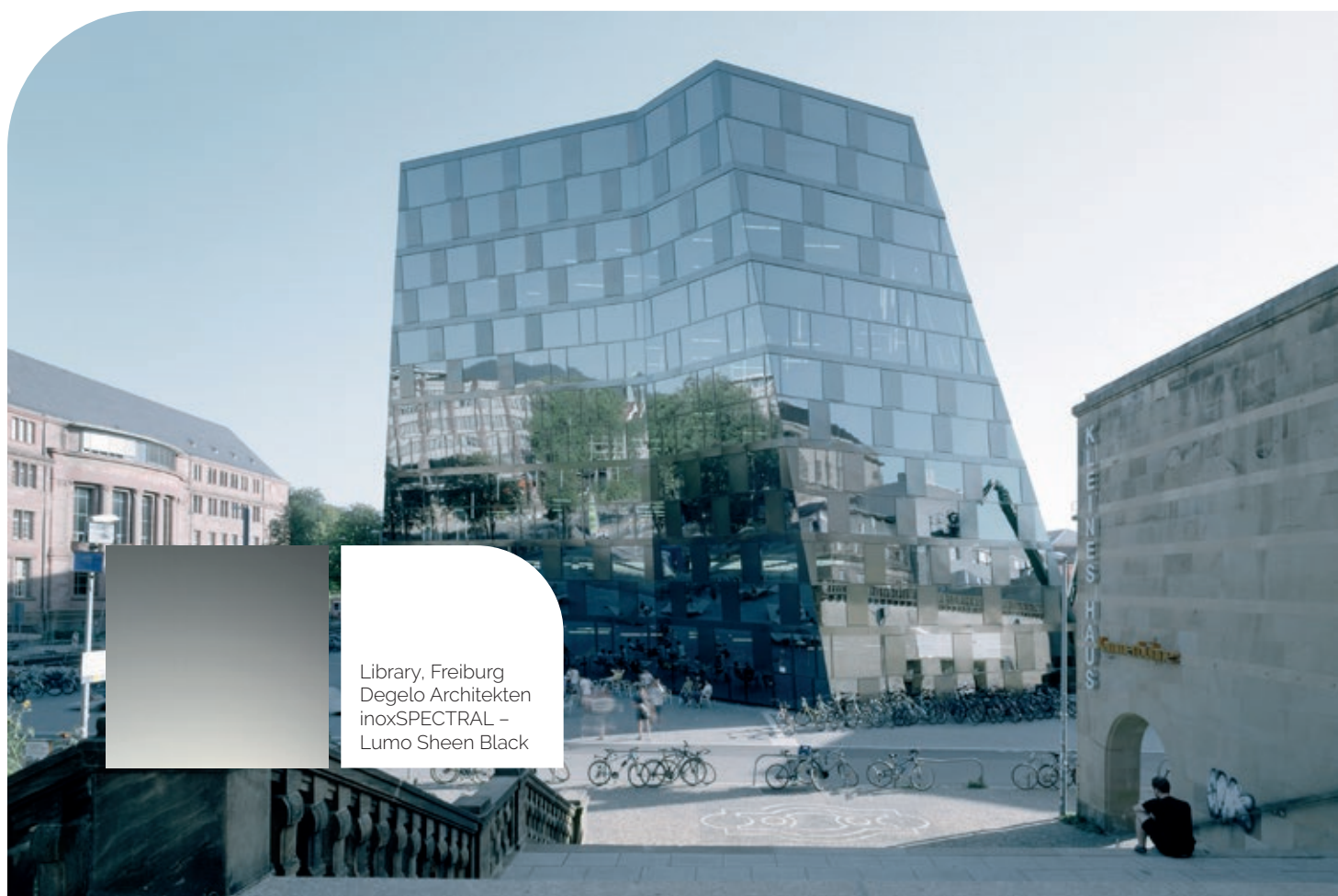


ENI HQ, Milano
Morphosis /
Nemesi Architects
inoxSPECTRAL –
Satin Smooth
Cobalt blue &
Rosygold



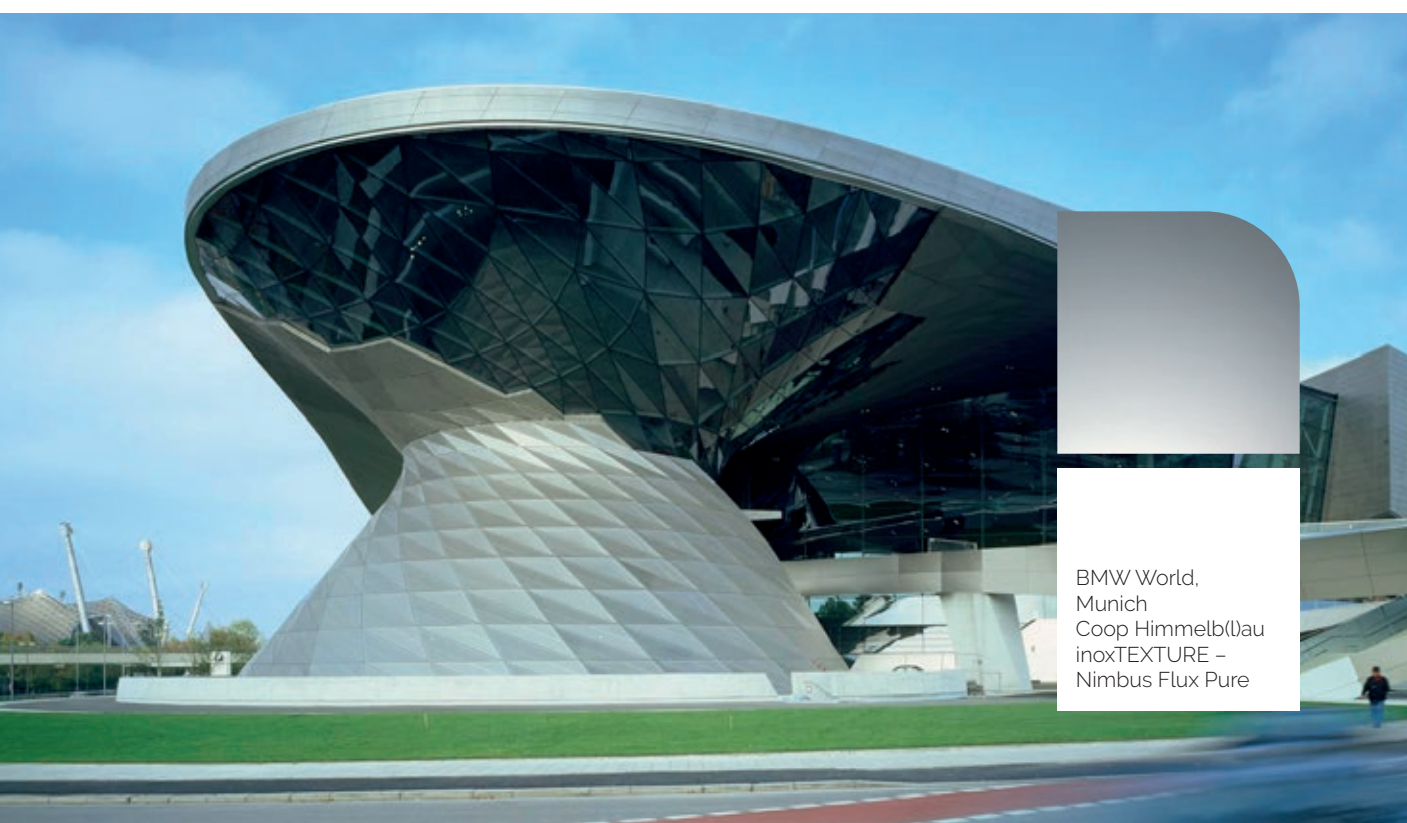
Office building, Oslo
Ghilardi+Hellsten
Arkitekter
inoxSPECTRAL –
Nimbus Flux Black

With our designed surfaces,
architecture becomes an expression
of both individuality and innovation.



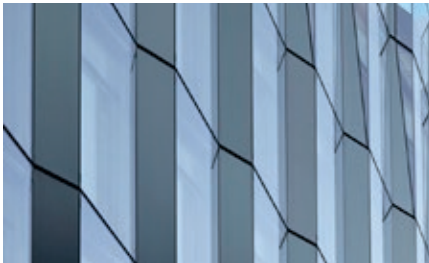
Library, Freiburg
Degelo Architekten
inoxSPECTRAL –
Lumo Sheen Black

Sustainable aesthetics that create vibrant surfaces and turn architecture into a sensory experience.



transforming your projects.

Our customers, most of whom have been with us for many years, come from a wide range of industries with a multitude of requirements. We transform their products and surfaces to different levels of performance and are only satisfied when everyone involved is delighted.



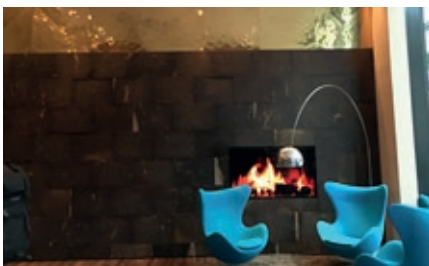
Cladding



Roofing | Roof drainage



Design | Furniture | Art



Store fitting | Interior



Fabric | Mesh



Elevator | Escalator



Signage | Exhibition design



Swimming pool

Disclaimer and Copyright

Subject to technical changes and printing errors. Color variations due to printing. No guarantees or assurances can be derived from this document. Please note color differences between production batches. All rights reserved. Reprinting or reproduction, even in part, is not permitted without the written consent of INOX-COLOR GmbH. inoxSPECTRAL and inoxTEC are registered trademarks of INOX-COLOR GmbH. Copyrights, unless held by the publisher: p. 11 / 19 top / 20 bottom / 21 top / 22 bottom / 23 top left: Roland Halbe | p. 16 top: NIS&FOR • Iconic Nice | p. 17 top / 22 top: Ralf Dieter Bischoff



INOX-COLOR GmbH
 Dreisteinheumatte 6
 74731 Walldürn, GERMANY
 Tel.: +49 (0) 62 82/92 38-0
info@inox-color.com

 **inoxcolor**
 transforming surfaces

www.inox-color.com