



 **inoxcolor**  
transforming surfaces



# Transforming surfaces.

We at INOX-COLOR are THE global manufacturer of cross-process surface finishing for sophisticated stainless steel products. We transform even the most unusual customer requests and innovative product ideas into highly customised solutions.



Our unique combination of competence enables an unlimited variety of stainless steel surfaces in functional and visually impressive quality, which our customers appreciate worldwide across all industries.

### **INOX-COLOR – transforming surfaces since 1984**

For 40 years, we have been transforming even unusual customer requests and innovative product ideas into highly customised application solutions. The individual processing methods are usually the starting point for our products; the aim is maximum individualisation of our finishing by combining several processes until the desired customer product is defined. With this combination competence, we enable our customers to raise their products to the highest quality level.

### **Performance spectrum**

Our spectrum ranges from mechanical processing to chemical processing and electrochemical finishing processes. As a result, INOX-COLOR's combination competence enables us to realise a wide range of requirements for surfaces and material properties. As a pioneer in the transformation of stainless steel, we are the global market leader with a range of processes, some of which we have developed ourselves.

### **Quality**

Our unique combination of competence enables an unimagined variety of surfaces in functional and visually impressive quality. We are certified according to ISO 9001:2015.

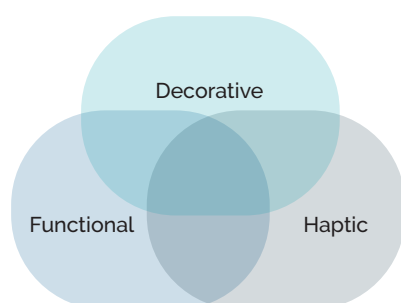
# Uniquely different.

## We take sophisticated products to the next level!

Great products place high demands on the quality of the surface finish. Exclusivity and extravagance are created through the skilful combination of look, feel and function! Unique combination competence, unlimited combinations.

## We realise unlimited combination possibilities!

Choose from our three feature dimensions and compose your own surface typology:

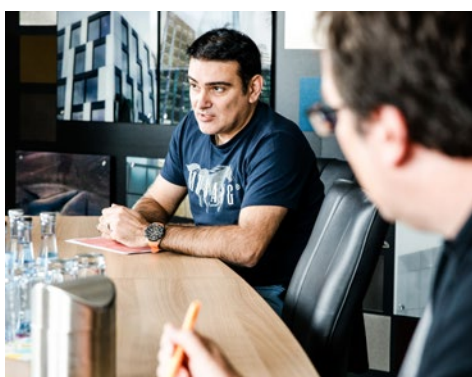
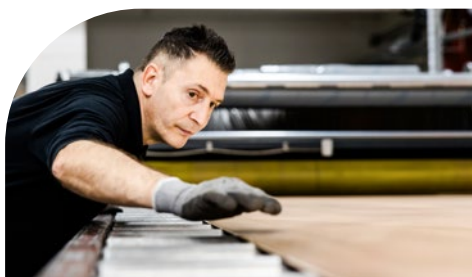


## We are experts and innovators for stainless steel surfaces!

40 years of experience make us experts in stainless steel surfaces. Self-developed processes combined with detailed advice and support for our customers emphasise this position. We proudly produce "MADE IN GERMANY" and are a reliable partner with guaranteed on-time delivery! Our success is based on consistent quality!


## Flexibility at all levels characterises our actions.

Flexible component dimensions from 1 to 6,000 mm and flexible machining processes by bundling all production steps in our own factories. This gives us flexibility and unrivalled combination options as well as freedom of design. We are flexible when it comes to organising deadlines according to your requirements, as well as the batch sizes for our production, which range from 1 piece to framework agreements with 10,000,000 pieces. Flexibility in service also means that customised samples are a given and, as a medium-sized company, we are able to make quick decisions on all issues.

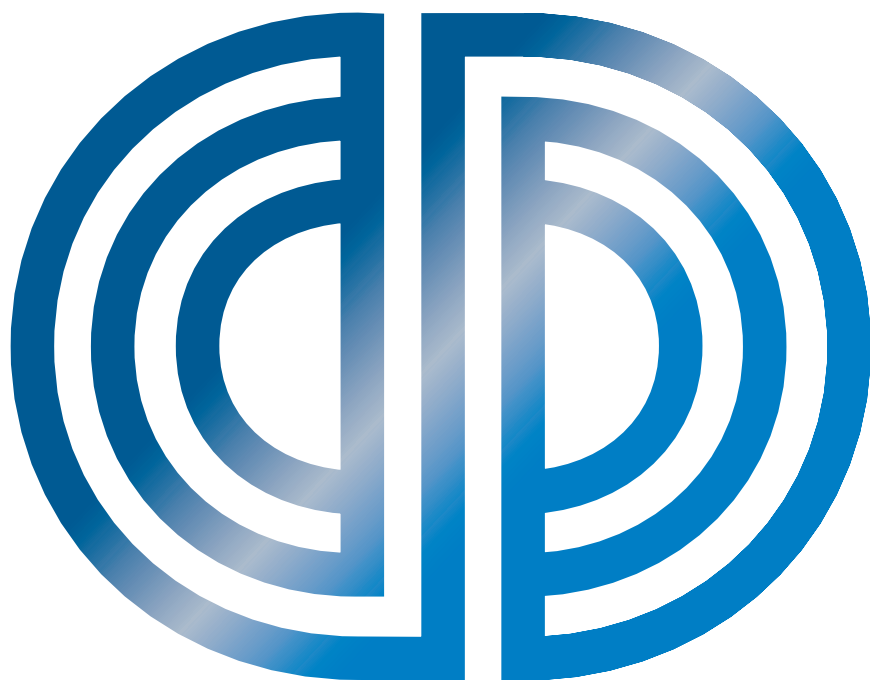


As surface experts, we offer advice on everything from material selection to customised processes and parameters.



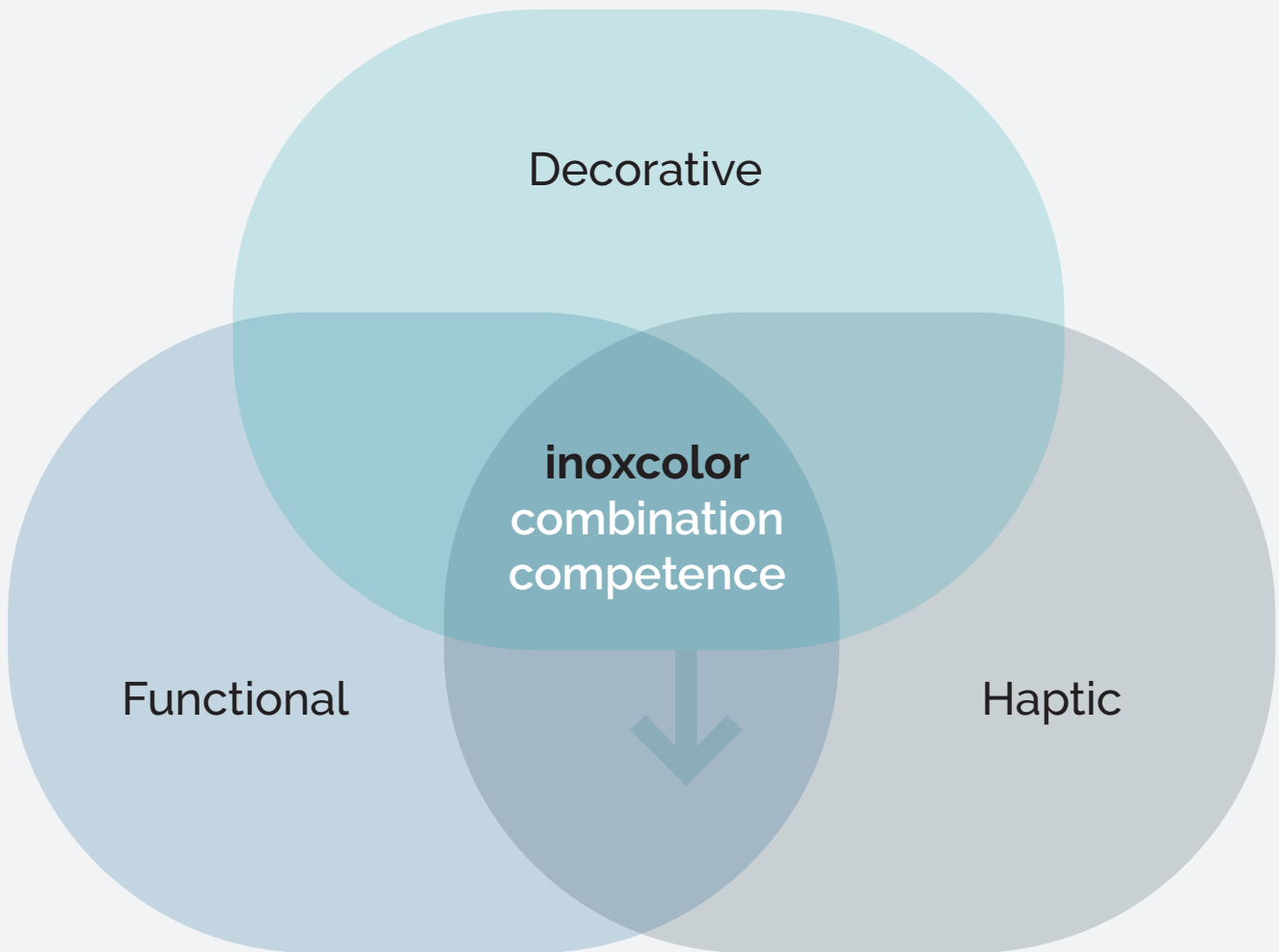


High-quality stainless steel surfaces with high functionality in a wide range of colour and design variations – we focus on your needs and requirements. Our recipe for success: consistent quality and expertise.



Infinite  
possibilities.

Surface finishing processes skilfully combined to meet individual customer requirements.




#### Turning wishes into solutions

Our **unique combination competence** enables an unlimited variety of stainless steel surfaces in functionally and visually impressive quality. The following four process groups structure our services and serve as a guide for the transformation of your surfaces..

 **inox perfect**

 **inox color**

 **inox texture**

 **inox atelier**

Despite all the diversity, all customers and products transformed by INOX-COLOR have one thing in common: the demand for perfection. The inoxPERFECT product group combines various processes and finishes with which we create perfect surfaces:

Electropolishing

Pickling

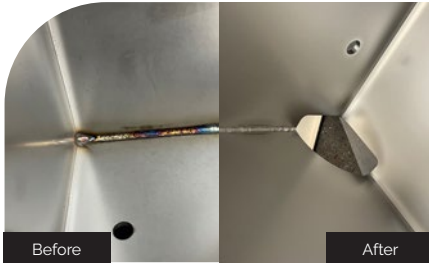
Deburring

Passivating

Conditioning &  
cleaning

Anti-Fingerprint &  
Easy2Clean

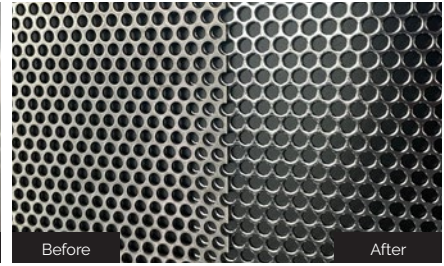




Electropolishing



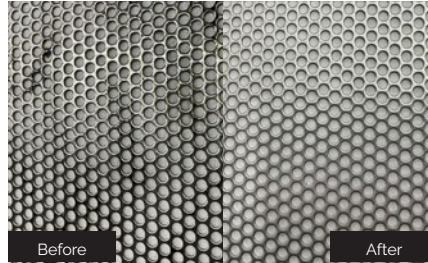
Pickling



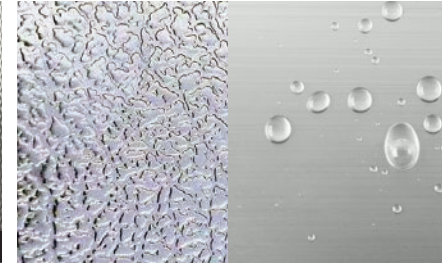
Deburring



Passivating



Conditioning &amp; cleaning



Anti-Fingerprint &amp; Easy2Clean

### Electropolishing

- o Metallically clean surface
- o Electro-chemical removal
- o Sheet metal, profiles, components, containers, small parts
- o Max. Dimensions: 6 x 1.2 x 2 m

### Pickling

- o Metallically clean surface
- o Chemical removal
- o Dipping, spraying, anodising
- o Max. Dimensions: 6 x 2.5 x 2.5 m

### Deburring

- o Removal of edges, splinters, burrs
- o Chemical or mechanical
- o Max. Dimensions: 6 x 1.2 x 2 m

### Passivating

- o Creation of a non-metallic protective layer
- o Corrosion protection
- o Max. Dimensions: 6 x 1.2 x 2 m

### Conditioning & cleaning

- o Removal of contamination
- o Creating processing conditions
- o Chemical, electro-chemical, mechanical
- o Max. Dimensions: 6 x 1.2 x 2 m

### Anti-Fingerprint & Easy2Clean

- o Dirt-repellent property
- o Reduces impairment caused by fingerprints
- o Free from coatings or paints
- o Increases corrosion protection
- o Max. Dimensions: 6 x 1.2 x 2 m



## INOX-COLOR especially transforms small parts and fasteners!

Whether surgical needles, springs, screws or small components. We also offer our extensive range of services for customised small parts. With our specially developed small parts equipment, we can process parts of any size as bulk goods or piece goods as well as for individual and serial products. The product properties can be significantly influenced, such as cleaning, deburring, colouring, polishing or smoothing.





Stainless steel as a material offers unsurpassed functional properties, and with our gift for combination we can create decorative surfaces and, above all, coloured surfaces without any paints. Two different colouring processes combined with further processing steps allow the composition of truly unique products and components.

**inoxspectral**

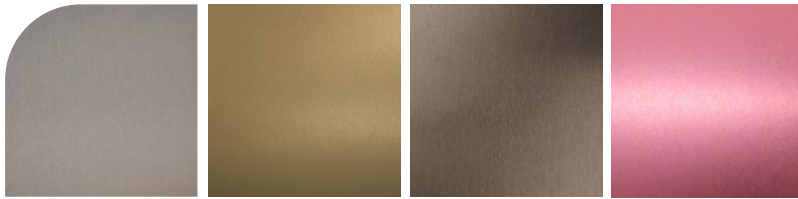
**inoxplasma**



The inoxCOLOR colouring processes are also available for small parts!

Do you want to colour or mark your bulk goods or items? A particularly scratch-resistant colouring can be achieved with the colour black.

## inoxspectral



Champagne

Gold

Bronze

Red\*



Steelblue

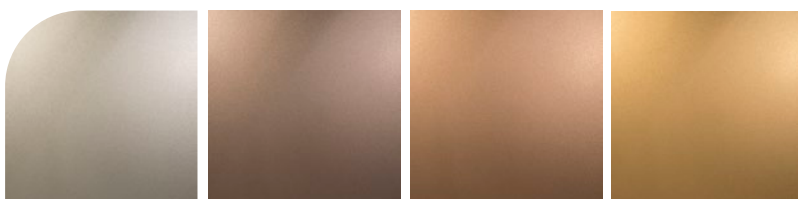
Cobaltblue

Green\*

Black

In this computer-controlled electro-chemical process, stainless steel is coloured without dyes, pigments or paints. Different colour effects develop depending on the thickness of the reinforced passive layer.

## inoxplasma

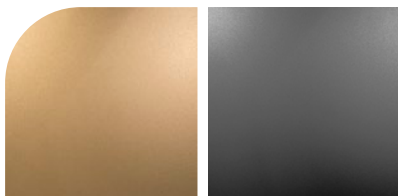


Champagne

Bronze

Rose-gold

Gold



Brass

Black

In this finishing process, stainless steel is vacuum vapour-deposited with a metallic coating. This coating with titanium plasma (PVD) enables the production of various colours, also in combination with mechanical pre-treatments such as grinding, blasting or polishing.

\* recommended for interior application only

The mechanical processing of stainless steel transforms the structure and numerous properties of our surfaces. We create shiny or glare-free surfaces, produce rough or mirror-smooth surfaces or change the haptic quality of a product. The result is a unity that offers more than the sum of its parts:

Grinding

Brushing

Hairline grinding

Vibration grinding

Cross grinding

Anti-slip

Bead blasting

Mirror polishing

Pattern rolling &  
embossing

Scratch resistance

Anti-Fingerprint

Easy2Clean



Grinding



Brushing



Hairline grinding



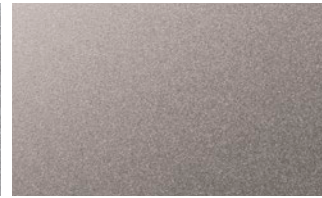
Vibration grinding



Cross grinding



Anti-slip



Bead blasting



Mirror polishing



Pattern rolling &amp; embossing



Scratch resistance



Anti-Fingerprint



Easy2Clean

### Grinding

- o Longitudinal, diagonal and cross grinding as well as Duplo grinding
- o Grit 24 to grit 1200 – one-sided and double-sided
- o Special grinding with defined roughness or grinding pattern
- o Max. Dimensions: 6 x 2 m

### Brushing

- o Longitudinal and cross brushing
- o Max. Dimensions: 6 x 2 m

### Hairline grinding

- o Max. Dimensions: 6 x 2 m

### Vibration grinding

- o Non-directional grinding, also rotation or eccentric grinding
- o Max. Dimensions: 6 x 2 m

### Cross grinding

- o Various grit sizes from very fine to very coarse
- o Max. Dimensions: 6 x 2 m



### Anti-slip

- o R11 to R13 proven with certificate
- o Embossed or grinded surface
- o Also pattern-rolled or teardrop sheets

### Bead blasting

- o Glass beads, ceramic beads
- o Flat, cloud-free and directionless
- o Sheets, profiles, rods, tubes
- o Blasting logos or motifs
- o Max. Dimensions: 6 x 2 m

### Mirror polishing

- o Removal of contamination
- o Creating processing conditions
- o Chemical, electro-chemical, mechanical
- o Max. Dimensions: 6 x 1,2 x 2 m

### Pattern rolling & embossing

- o Over 20 different patterns available
- o Embossed on one or both sides depending on decor



### Scratch resistance

- o Specially developed hardened surface
- o Particularly scratch-resistant



### Anti-Fingerprint

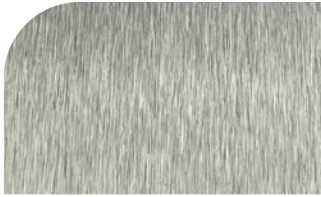
- o Reduces impairment caused by fingerprints
- o Free from coatings or paints
- o Increases corrosion protection
- o Max. Dimensions: 6 x 2 m



### Easy2Clean

- o Dirt-repellent properties, easy maintenance
- o Free from coatings or paints
- o Max. Dimensions: 6 x 2 m

All inoxTEXTURE processes allow a wide range of finishes and variations:



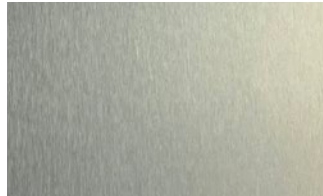
Longitudinal grinding K36



Longitudinal grinding K180



Longitudinal grinding K240



Longitudinal grinding K600



Diagonal grinding

The variety of all our finishes and their characteristics cannot be depicted in a brochure. The differences are also only partially visible in pictures. These images show examples of some of the different surface finishes.

We recommend a consultation appointment where we can show you the possibilities in a tangible and competent way using samples!

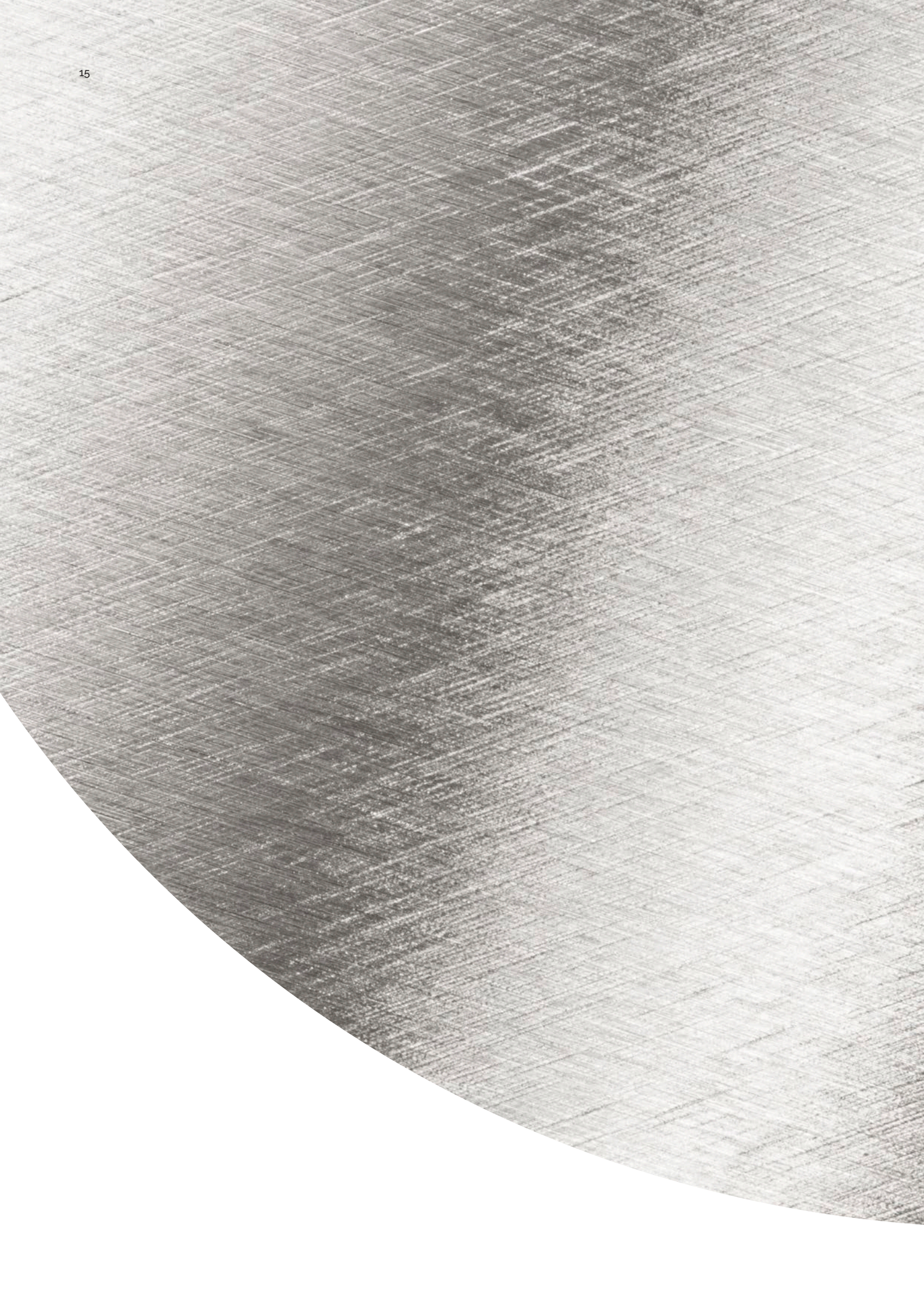
How do our services differ from standard providers?

### inoxTEXTURE

- ∅ Constant grinding pattern
- ∅ Individual  $R_a$  value
- ∅ Visual inspection of each sheet
- ∅ Flexible delivery date
- ∅ Flexible material thickness up to 10 mm
- ∅ Flexible dimensions up to max. 6 x 2 m

### Standard supplier

- ∅ Fluctuating grinding pattern
- ∅ Fluctuating standard
- ∅ Random sample inspection
- ∅ Delivery date depends on capacity utilisation
- ∅ Material thickness up to 4 mm
- ∅ Standard widths: 1.5 or 1.25 m



We are the authority in surface treatment! Unrivalled in terms of choice, variety, advice, experience and customisation! We transform surfaces into emotions - with decades of experience and intensive development work, we create stainless steel surfaces you have never seen before. At inoxATELIER, we combine creativity and technical expertise to create truly exceptional decorative surfaces:

Iconic

White

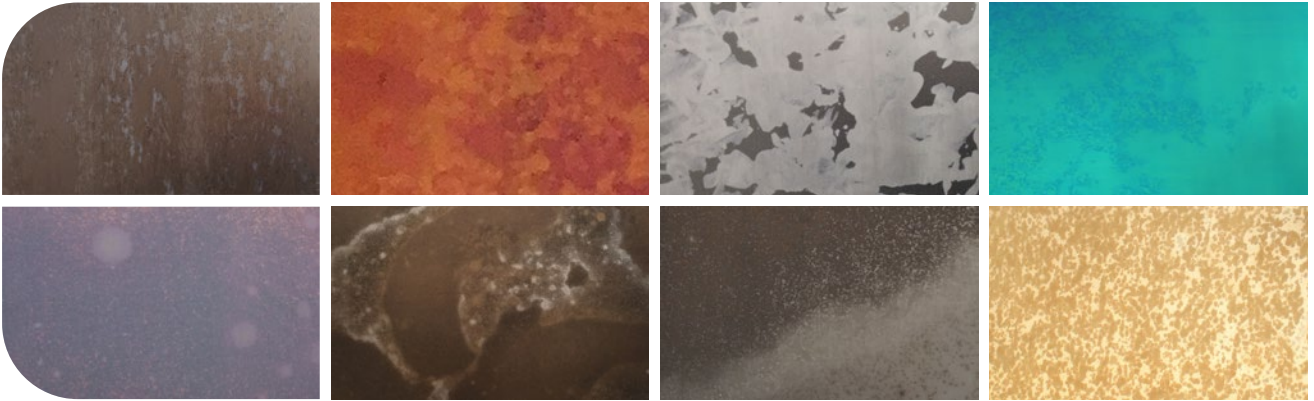
Black

Vintage

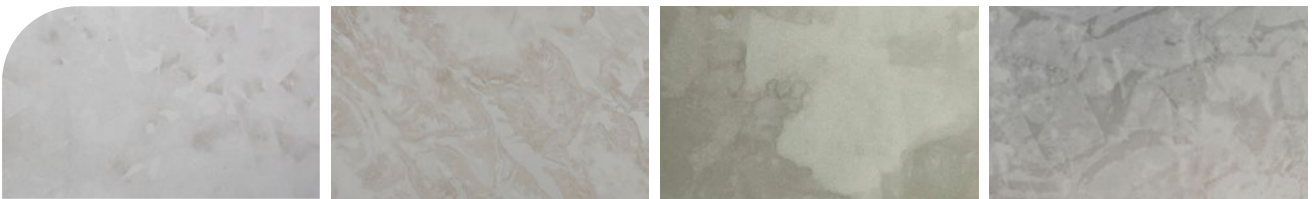
Vandal-Protect

Pearltec

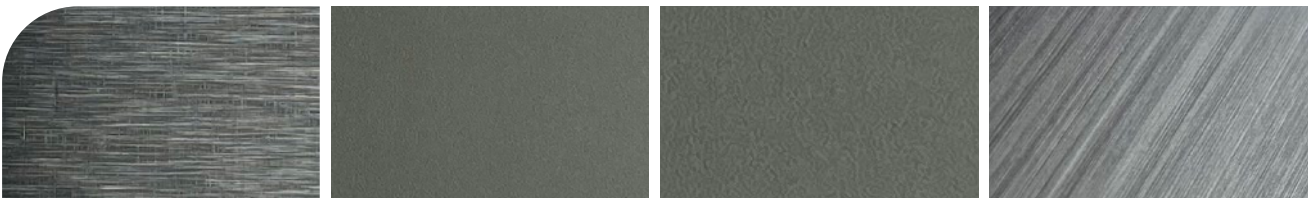




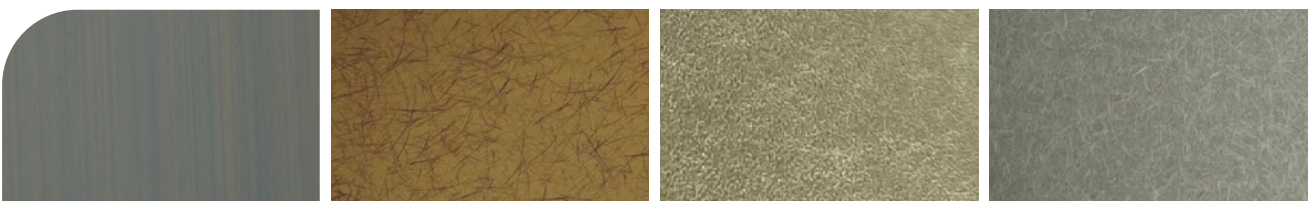
Iconic



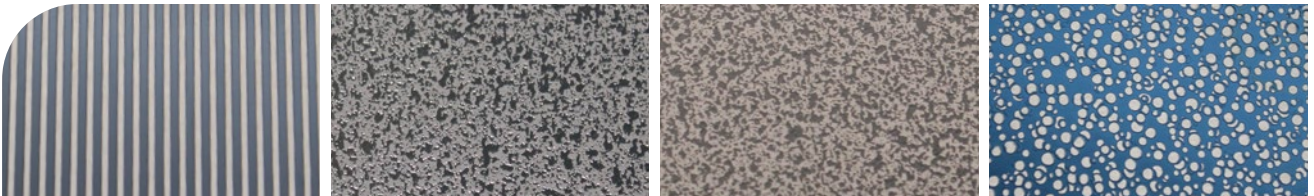
White



Black



Vintage



Vandal-Protect



Pearltec

These surfaces show only a selection of our surface treatment capabilities.

# Transforming your business.

Our customers, most of whom have been with us for many years, come from a wide range of industries with a multitude of requirements. We transform their products and surfaces to different levels of performance and are only satisfied when everyone involved is delighted.





Machinery and equipment



Components



Kitchen &amp; household appliances



Medical technology



Lifts &amp; escalators



Tank and container construction



Automotive



Other sectors

### Machinery and equipment

Machine industry, welded constructions, housings, apparatus engineering, food industry, covers, conveyor systems, components, cash desks, petrol pumps and more

### Kitchen & household appliances

Sinks, ovens, catering, clean rooms, cold rooms, knives, extractor bonnets, refrigerators, containers, counters, buffets, dispensers, kitchen appliances, kitchen utensils and more

### Lifts & escalators

Doors, cabin walls, portals, control panels, displays, goods lifts, escalators, handrails and more

### Automotive

Vehicle parts, door sills, underride protection, trim strips, exhaust systems, exhaust (rear silencer), brackets, windscreen wipers, loading sill protection and more

### Components

Screws, rivets, profiles, substructures, springs, clips, writing instruments, buttons, tools, fashion, jewellery, decoration, outdoor articles, holders and more

### Medical technology

Medical instruments, pharmaceutical industry, clean rooms and more

### Tank and container construction

Tanks for the beverage industry, silo systems, pressurised containers, process containers, transport containers, reactors, tank cladding, display cellar containers and more

### Other sectors

Architecture, art, design, interior, shop fitting, exhibition stands, furniture, swimming pools, nets, fabrics, roof and roof drainage, gratings, facades, signage and labelling and more



We take products to the next level.  
The following selection of processing requests  
are common requirements we are asked to fulfil:

- o Remove machining marks
- o Prevent build-up deposits
- o Establish coatability
- o Improve fatigue strength
- o Cleaning or achieving metallic purity
- o Colouring
- o Micro-smoothing
- o Adjust reflective behaviour (increase gloss or matting)
- o Creating and structuring defined roughness
- o Increase corrosion resistance and create passivity
- o Define haptics
- o Anti-Graffiti, Easy2Clean and Anti-Fingerprint
- o Deburring and smoothing
- o Improve emission behaviour
- o Ensure high-frequency conductivity
- o Improve friction behaviour and wear behaviour
- o Define cleaning behaviour and sterile behaviour
- o Fulfil clean room requirements
- o Increase vacuum behaviour
- o Ensure solderability or weldability
- o Improve decorative properties
- o Increase the aesthetic value of the product
- o Marking and partial finishing
- o Increase scratch resistance
- o Creating slip resistance
- o Remove impurities and process residues
- o Achieve biocompatibility

INOX-COLOR GmbH  
Dreisteinheumatte 6  
DE-74731 Walldürn  
Tel.: +49 (0) 62 82/92 38-0  
Fax: +49 (0) 62 82/92 38-99  
info@inox-color.com

 **inoxcolor**  
transforming surfaces

[www.inox-color.com](http://www.inox-color.com)